

REVIEW

Open Access



# Early onset fetal growth restriction

Andrea Dall'Asta<sup>1,2†</sup>, Valentina Brunelli<sup>3†</sup>, Federico Prefumo<sup>3</sup>, Tiziana Frusca<sup>2</sup> and Christoph C Lees<sup>1,4,5\*</sup>

## Abstract

Fetal growth restriction (FGR) diagnosed before 32 weeks is identified by fetal smallness associated with Doppler abnormalities and is associated with significant perinatal morbidity and mortality and maternal complications. Recent studies have provided new insights into pathophysiology, management options and postnatal outcomes of FGR. In this paper we review the available evidence regarding diagnosis, management and prognosis of fetuses diagnosed with FGR before 32 weeks of gestation.

**Keywords:** Fetal Doppler, Fetal complications, Iatrogenic preterm delivery, Antenatal counseling, Neonatal intensive care unit

## Background

Fetal growth restriction (FGR) is both a common obstetric condition and a major cause of perinatal morbidity and mortality [1, 2]. Early FGR by definition is diagnosed at or below 32 weeks and differs from late onset FGR also in terms of its clinical manifestations, association with hypertension [3], patterns of deterioration and severity of placental dysfunction [4, 5].

The perinatal outcome of FGR is dependent on the severity of growth restriction; an estimated fetal weight below the 3<sup>rd</sup> centile and/or abnormal umbilical artery Doppler are strongly associated with adverse perinatal outcome [6]. A recent study has shown how the incidence of perinatal death is highest in those with a birth weight below the 2.3<sup>rd</sup> centile, falling gradually with an increasing birth weight up to the 80<sup>th</sup> and 90<sup>th</sup> centiles, at which the lowest death rates occur [7].

FGR is a complex and multifactorial disorder affecting the fetal development that often results in multiple perinatal complications [8–10] and currently represents a major risk factors for long term poor neurological outcome. FGR is also associated with poor postnatal growth and numerous studies in both humans and animals have shown an association between low birth weight and development of cardiovascular disease including increased risk

of hypertension, diabetes, dyslipidemia and coagulation in children and adults [9–16]. These observations were first made in 1989 by Barker and colleagues and confirmed in the last few decades [17, 18]. It has been postulated that cardiovascular remodelling is due to hemodynamic redistribution and adaptation to hypoxia and insufficient nutrition [17–22].

At present there is no effective treatment to reverse the course of FGR except delivery. Fetal growth restriction is probably among the obstetric entities where there is the greatest variation in clinical practice, in terms of monitoring and recommended gestational age at delivery. Prenatal recognition of FGR remains the main challenge in daily obstetric practice. Correct surveillance, antenatal management and timing of delivery can improve fetal and neonatal outcomes.

## Etiology

The causes of FGR are heterogeneous and can be classified as fetal, maternal, environmental, and placental. Small fetuses can be divided into two groups: non-placenta mediated growth restriction and placenta mediated [23].

The first group includes structural and chromosomal/genetic anomalies (trisomies 13 and 18; genetic conditions such as Russel Silver Syndrome), congenital infections (rubella, cytomegalovirus, toxoplasmosis) [24] and inborn errors of metabolism. The second and much more common group includes medical conditions that can affect placental function: pre-eclampsia, chronic hypertension and gestational hypertension are complicated by FGR in 30 to 40% of cases [23]; diabetes is complicated by FGR in 10 to 20% of cases

\* Correspondence: christoph.lees@imperial.nhs.uk

†Equal contributors

<sup>1</sup>Centre for Fetal Care, Queen Charlotte's and Chelsea Hospital, Imperial College Healthcare NHS Trust, Du Cane Road, London W12 0HS, United Kingdom

<sup>4</sup>Department of Surgery and Cancer, Imperial College London, London, United Kingdom

Full list of author information is available at the end of the article



irrespective of glycemic control [25]; maternal vascular disease, renal disease, thrombophilia, autoimmune disease, can lead to uteroplacental hypoperfusion thereby impairing fetal growth [26]; hypoxemia secondary to cardiac, respiratory and hematological disorders may also cause FGR.

Others maternal risk factors associated with an increased risk of a SGA neonate are maternal age  $\geq 35$  years and particularly in women  $\geq 40$  years old [27], African American [28] or Indian/Asian ethnicity [29], nulliparity [30], social deprivation [31], body mass index (BMI)  $< 20$ , BMI  $> 25$  [32], alcohol intake [33], drug use (with cocaine use during pregnancy being the most significant) [34] and cigarette smoking [35]. Singleton pregnancies following IVF are also at increased risk for SGA [36]. Twin pregnancies have a high incidence of FGR: about 20–30% of dichorionic and 40% of monochorionic twin pregnancies will suffer from FGR [37].

### Definition and diagnosis

Multiple definitions of FGR have been suggested over the decades by National and International Societies and experts (Table 1) [38, 39]. Despite this, there is currently no agreed upon diagnostic criteria for FGR. The American College of Obstetricians and Gynecologists (ACOG)

defines FGR as an estimated fetal weight less than the 10<sup>th</sup> centile [40]. The Royal College of Obstetricians and Gynaecologists (RCOG) uses fetal abdominal circumference (AC) or estimated fetal weight (EFW)  $< 10^{\text{th}}$  centile to diagnose a FGR fetus [41]. Other Authors have suggested a cut off of the 3<sup>rd</sup> centile to detect pregnancies at higher risk of adverse outcomes [42]. In 2002 the TRUFFLE group, which included 20 European Perinatal experts, defined fetal growth restriction as the combination of abdominal circumference  $< 10^{\text{th}}$  centile and umbilical artery Doppler pulsatility index (PI)  $> 95^{\text{th}}$  percentile [3]. Similarly, after prospectively assessing the adverse perinatal outcomes in over 1100 pregnancies where EFW at inclusion was  $< 10^{\text{th}}$  centile, the PORTO group defined FGR as a combination of fetal smallness (EFW  $< 5^{\text{th}}$  centile) and umbilical artery Doppler PI  $> 95^{\text{th}}$  percentile [6]. More recently, early FGR has been defined by a consensus committee of international fetal medicine experts with solitary parameters either EFW  $< 3^{\text{rd}}$  centile, AC  $< 3^{\text{rd}}$  centile or absent umbilical artery end diastolic flow [43].

In its latest practice bulletin the ACOG acknowledges the fact that terminology for classifying fetuses and newborns who have failed to achieve normal weight is inconsistent [40]. Indeed, the acronyms SGA and FGR are often used interchangeably. However, fetuses with a weight  $< 10^{\text{th}}$  percentile may be constitutionally small but healthy and not necessarily growth restricted. On the other hand, an estimated weight  $> 10^{\text{th}}$  percentile does not necessarily denote normal fetal growth. Because of this, FGR should be referred to fetuses with pathological smallness caused by an underlying functional problem and hence a definition including not only a biometric cut off but also Doppler indices of fetoplacental function is currently agreed in most Fetal Medicine Units [3, 6, 43, 44].

FGR may also be classified by gestational age at onset as early and late, with an arbitrary cut-off conventionally set at 32 weeks: the extremes of the clinical spectrum of FGR differ not only for gestation at onset, but also for clinical manifestations, patterns of fetal deterioration, association with hypertensive disorders of the pregnancy and severity of placental dysfunction [45, 46]. Fetuses with late-onset disease do not present the same sequence of Doppler deterioration described for early-onset FGR [6]. Early-onset FGR represents 20–30% of all FGR and is associated with gestational hypertension and/or pre-eclampsia in up to 70%. On the other hand, late-onset FGR, which represents approximately 70–80% of cases of FGR, shows a weaker association with hypertensive disorders of the pregnancy, roughly 10% [6].

A prerequisite for a correct diagnosis of FGR is accurate dating of the pregnancy, most usually in the first trimester. The Hadlock formula is the most widely accepted method of estimating fetal weight using a composite sonographic measurement of fetal head, abdomen, and femur [47]. Fetal size is influenced by race, ethnicity, sex, parity, maternal

**Table 1** FGR definition in recent literature

Institution / Author	FGR definition
Baschat et al 2007 [101]	Combination of small fetal AC with elevated UA Doppler blood flow resistance
Cochrane 2013 [65]	Failure to reach the growth potential
DIGITAT 2012 [38]	EFW or AC $< 10^{\text{th}}$ centile for gestational age
ACOG 2013 [40]	Fetuses with EFW $< 10^{\text{th}}$ centile for gestational age
RCOG 2013 [41]	Small-for-gestational age (SGA) refers to an infant born with a birth weight less than the 10 <sup>th</sup> centile. Fetal growth restriction (FGR) is not synonymous with SGA.
SOGC 2013 [39]	Intrauterine growth restriction refers to a fetus with a EFW $< 10^{\text{th}}$ centile on ultrasound that, because of a pathologic process, has not attained its biologically determined growth potential.
PORTO 2013 [6]	EFW $< 5^{\text{th}}$ percentile & umbilical artery PI $> 95^{\text{th}}$ percentile
TRUFFLE 2013 [3]	AC $< 10^{\text{th}}$ percentile & umbilical artery PI $> 95^{\text{th}}$ percentile
Gordijn et al 2016 [43]	AC $< 3^{\text{rd}}$ centile OR EFW $< 3^{\text{rd}}$ centile OR AREDF OR Both of the following: 1) EFW or AC $< 10^{\text{th}}$ centile and 2) UtA PI $> 95^{\text{th}}$ centile OR UA PI $> 95^{\text{th}}$ centile.

AC abdominal circumference

AREDF absent/reversed umbilical artery end diastolic flow

EFW estimated fetal weight

PI pulsatility index

UtA uterine artery

UA umbilical artery

size and genetic factors [48, 49]. In the 1990s, Gardosi et al. developed a method that used customized birth weights to identify the growth potential for individual fetuses: antenatal growth charts were customized for maternal characteristics including height, weight, ethnic origin and parity [50, 51]. The use of customized growth charts is purported to increase the antenatal detection of fetal growth restriction, improving the distinction between normal and abnormal growth, but whether this improves clinical outcomes still has to be demonstrated [51]. Customization is questioned by Intergrowth-21<sup>st</sup> according to which growth patterns in healthy pregnancies are not considered to be modulated by ethnic and environmental conditions [52].

Ultrasound assessment of fetal anatomy and amniotic fluid volume is complementary to the Doppler investigation of fetoplacental circulation to distinguish FGR from constitutionally small fetuses and to identify the most likely underlying etiology of the fetal smallness (e.g., aneuploidy, viral infection, genetic syndromes). The role of determining the karyotype is very controversial; it may be offered in cases where there is a dissociation between growth, amniotic fluid and Doppler.

### Screening

Early screening to predict the likelihood of a FGR fetus include medical and obstetric history, uterine artery Doppler and maternal serum parameters [53]. Uteroplacental Doppler is the most powerful predictor of the clinical deterioration and the circumstances surrounding delivery [54]. The systematic review and meta-analysis conducted by Cnossen et al. in 2008 established uterine artery Doppler ultrasonography as a predictor of FGR, providing a more accurate prediction when performed in the second trimester than in the first-trimester [55]. Numerous studies have also shown that some maternal biochemical markers (e.g. pregnancy associated plasma protein-a, PAPP-A; alfa-fetoprotein, AFP; human chorionic gonadotropin, hCG; Inhibin A) are associated with placental function and fetal growth, and their levels are altered in SGA and FGR pregnancies [56]. A low level first trimester PAPP-A should be considered a major risk factor for delivering a SGA neonate; the combination of uterine artery Doppler and maternal serum markers appears promising for improving prediction of SGA fetus, although predictive values are still poor [57–59]. Use of combination testing in the second trimester appears to predict adverse outcome related to placental insufficiency more effectively than first trimester screening [60].

### Role of fetal Doppler in FGR

The fetal vessels that are more commonly examined include umbilical artery, middle cerebral artery, and ductus venosus [61].

Early- and late-onset FGR epitomize two distinct clinical phenotypes of placental dysfunction and differ significantly

in clinical progression. Early-onset FGR is associated with high impedance utero placental perfusion which in turn leads to elevated umbilical artery blood flow resistance once villous damage exceeds 30% [45].

The relationship between fetal size and growth and fetal Doppler indices in FGR is complex but in general Doppler deterioration is associated with absolute fetal size rather than growth velocity [62].

Late-onset FGR is more common but less severe with absent or mild placental abnormalities; umbilical artery Doppler may be normal, but fetuses may react with decreased middle cerebral artery (MCA) impedance in response to hypoxemia [63].

### Umbilical artery Doppler

Umbilical artery Doppler is the only measure that provides both diagnostic and prognostic information for the management of FGR [64]. A Cochrane systematic review reported that the use of umbilical artery Doppler was associated with a reduction in perinatal deaths, inductions of labor and cesarean deliveries [65]. Also according to RCOG the use of umbilical artery Doppler in a high-risk population has been shown to reduce perinatal morbidity and mortality, and should be the primary surveillance tool in the SGA fetus [41].

Umbilical artery flow identifies different degrees of impaired placental function. Absent or reversed end diastolic flow (AEDF or REDF) indicates an important reduction of blood flow and severe fetal deterioration.

Thanks to longitudinal studies of high-risk pregnancies, we know that the the transition from AEDF to REDF may be slow and gradual in early FGR. Absent end-diastolic velocities in the umbilical artery, if not associated with severe maternal disease, can last for days and weeks before abnormal heart rate pattern or delivery [66].

Reverse end-diastolic flow velocity represents an extreme abnormality in waveform and resistance, with a perinatal mortality of 50% and significant perinatal morbidity [67]. It has also been demonstrated that FGR fetuses with absent or reverse end-diastolic flow in the umbilical artery not only have an increased fetal and neonatal mortality but also a higher incidence of long-term permanent neurologic damage when compared with FGR fetuses with positive diastolic flow in the umbilical circulation [68].

### Middle cerebral artery Doppler

A condition of chronic hypoxia determines a fetal flow redistribution that manifests as vasodilatation in the brain circulation. Cerebral vasodilatation, easily detectable as a reduction in the PI of the middle cerebral artery (MCA) represents an adaptative mechanism in response to hypoxia.

Recently published data emphasize the association between abnormal MCA PI and adverse perinatal and

neurological outcome [64]. MCA may be valuable for the identification of adverse outcome among late-onset FGR though its role in prediction is weak, independently of umbilical artery Doppler, which is often normal in these fetuses [69–71]. The cerebroplacental ratio (CPR) quantifies the redistribution of cardiac output by dividing the Doppler indices of the middle cerebral artery (MCA) with that of the umbilical artery. The PORTO study demonstrated the association between redistribution, either isolated or associated with umbilical artery PI >95<sup>th</sup> centile, and adverse perinatal outcome [6, 63]. More recent data have shown significantly lower MCA PI and CPR among fetuses with EFW <10<sup>th</sup> centile diagnosed gestation beyond 32 weeks who experienced adverse perinatal outcomes in terms of intrapartum distress and abnormal cord pH [72]. Of note, such abnormal Doppler patterns have been related to histological signs of placental insufficiency [73]. It is estimated that in late-onset FGR fetuses abnormal CPR is present before delivery in 20 to 25% of cases [74]. Of note, it is important to underline that MCA Doppler is currently not included in any protocol for the diagnosis and the management of early FGR fetuses as insufficient data exists in prospective studies to define its role.

#### Ductus venosus Doppler

Doppler examination of the ductus venosus (DV) plays an important role in the management of fetuses with early fetal FGR with the hope of improving the timing of delivery and outcome.

FGR is associated with increased ductus venosus (DV) shunting, and increasing impedance in the umbilical artery, has a graduated effect on the degree of shunting [20]. In contrast to alterations in umbilical artery and middle cerebral artery, which are early signs of adverse outcome, longitudinal studies have demonstrated that DV flow waveforms become abnormal only in advanced stages of fetal compromise [75–78].

It has been showed that the PI of the DV is related to pH at birth, with higher DV pulsatility associated with lower pH at birth [79].

In 2001 Hecher et al. described the time sequence of changes in fetal monitoring variables in fetal growth restriction; they found that ductus venosus PI and short-term variation of fetal heart rate are important indicators for the optimal timing of delivery before 32 weeks of gestation and correlate with fetal outcome at delivery [78]. Ferrazzi et al identified the temporal sequence of abnormal Doppler changes in the fetal circulation in early growth restricted fetuses. Early changes occurred in umbilical and middle cerebral arteries (AEDF and brain sparing respectively); late changes were significantly associated with perinatal death and included umbilical artery

REDF and abnormalities in the DV Doppler (reverse A-wave in particular) [2]. Another study demonstrated that absent or reverse velocities in the DV during atrial contraction are associated with perinatal mortality independently of the gestational age at delivery [79]. Bilardo et al. showed that during the last 24 h before delivery DV pulsatility index for veins (PIV) and umbilical artery PI were significantly higher and STV lower in the adverse outcome group, while 2–7 days before delivery only DV PI was significantly higher. These results indicate that DV PI measurement is a good predictor of perinatal outcome and may be useful in determining the timing of the delivery in of early FGR fetuses [80]. In about 50% of cases, abnormal DV precedes the loss of short-term variability in computerized cardiotocography (CTG) [79], and in about 90% of cases it is abnormal 48 to 72 h before the biophysical profile (BPP) [80].

#### Cardiac and aortic isthmus Doppler

Cardiac Doppler allows the evaluation of the functionality of the heart with the deterioration of FGR. Systolic and diastolic heart function, atrio-ventricular flows and ventricular outflows can be studied.

In 1988 a prospective longitudinal study by Rizzo et al. described the physiological patterns of blood flow velocity waveforms in normal and in SGA fetuses. In normal fetuses the ratio between the E velocity (early passive ventricular filling) and the A velocity (active ventricular filling during atrial contraction) increased progressively during pregnancy in both transmitral and transtricuspidal waveforms. In SGA fetuses, the E/A ratios did not increase during pregnancy and the values obtained were significantly lower than in normal fetuses [81]. In FGR fetuses the time to peak velocity at the level of the ascending aorta and pulmonary is also lower than in normal fetus, indicating an impairment of myocardial contractility [82].

The literature suggests a potential role for Doppler imaging of the aortic isthmus (AoI) in the clinical surveillance of fetuses with severe FGR. Retrograde flow in the AoI in growth-restricted fetuses correlates strongly with adverse perinatal outcome and neurological deficit in the infant [83, 84].

The myocardial performance index (MPI) is a more recently described parameter that may be useful in fetal monitoring. MPI, AoI PI, together with DV PIV, increase with progressive fetal deterioration. According to Cruz-Martinez et al., at the last examination before delivery the proportion of increased MPI (70.4%) was significantly higher than that of abnormal AoI PI (55.7%) and DV PIV (47.8%) [85]. A significantly higher MPI in growth restricted fetuses compared to appropriately grown fetuses was also demonstrated by Hassan et al, who additionally found a potential role of the MPI



in the prediction of arterial and venous Doppler abnormalities in small for gestational age fetuses [86].

### Management

Despite being one of the most relevant and most commonly studied conditions in modern obstetrics, there has not been consensus among International Guidelines regarding the optimal management of early onset FGR in terms of monitoring and recommended gestational age at delivery, which can be due to the lack of comparability among studies and the paucity of randomized controlled trials available [3, 65, 87, 88]. Nevertheless, more recent data suggest that reliable protocols of surveillance and management are emerging now [3, 88].

When managing FGR fetuses clinicians focus on EFW, gestational age and fetal Doppler. A threshold of about 500 grams is often considered the value of EFW above which a fetus is potentially surviving outside the uterus, and which must be considered especially when evaluating the options of termination of pregnancy, invasive testing and delivery of a potentially viable fetus. Furthermore, an EFW <3<sup>rd</sup> centile has been described as predictive of poor outcome [89].

Importantly, gestational age is the most significant determinant of both survival and intact survival [46]. A remarkable reduction in the gestational age cut off for neonatal survival has been achieved, and current neonatal practice has led to the survival of fetuses born from 22 weeks onwards [90]. Recently published data report a better than expected prognosis for periviable small fetuses [91], however according to Visser et al. [92] active intervention by delivery of early FGR fetuses should not be recommended before 26 weeks as their outcome is comparable to that of AGA infants born at a 2-weeks earlier gestational age. Counseling plays a crucial role, however in a scenario of lacking evidence it is usually individualized on the basis of the clinical features and the option of pregnancy termination may be discussed when legally available.

Monitoring fetuses by using umbilical artery Doppler has been demonstrated to reduce the perinatal death rate [66, 69] though there are few clues as to when delivery should be undertaken. Abnormal umbilical artery PI is a feature of FGR according to the TRUFFLE group as a PI above the 95<sup>th</sup> centile together with AC <10<sup>th</sup> centile are the diagnostic criteria for FGR; a raised umbilical PI is suggestive of severe placental disease, which represents the most common cause for FGR [69]. However, as reported by Figueras et al. [64] the management based on umbilical artery alone cannot be effective in those cases of mild placental disease, which account for a proportion of the early onset FGR fetuses, which show reduced MCA pulsatility or cerebroplacental ratio (CPR) (or cerebro-umbilical C-U ratio). Unfortunately, there is not enough evidence to consider MCA Doppler effective in managing

FGR fetuses. A recent review by DeVore et al [93] reports that an abnormal CPR is associated with adverse pre- and post-natal outcomes even in fetuses with early-onset SGA; however, it has never been demonstrated whether delivering earlier fetuses who show features of redistribution could add any benefit [64, 93, 94].

Ductus venosus (DV) Doppler is currently used in most European Specialist Perinatal Units as the reference for the management of FGR fetuses before 32 weeks. DV has been demonstrated to be the single strongest Doppler parameter to predict the short term risk of fetal death in early onset FGR [64] and there is good correlation between abnormal DV waveform and late stage acidemia. Absent or reversed A-wave have been reported to be associated with increased risk of intrauterine fetal death (40–70%) independently of the gestational age at delivery; DV PI >95<sup>th</sup> centile also confers higher risk of adverse outcome, although at lesser extent than that of reversed or absent A-wave [87]. According to Hecher et al. [76] DV is, together with computerized cardiotocography (cCTG), the parameter which last modifies before delivery, and the TRUFFLE group has demonstrated the benefits of a longer stay in utero, especially with regard to long term outcomes.

The biophysical profile has not been demonstrated to be beneficial in high risk pregnancies in terms of perinatal deaths and Apgar <7 at 5 min [33], it is not an accurate predictor of fetal acidemia [24, 34], and there is concern regarding the high false positive and false negative rate (up to 23% of instances of intrauterine fetal death in fetuses with BPP >6 and 11% in those with BPP >8) reported in early-onset very preterm FGR fetuses [46].

Conventional cardiotocography (CTG), along with the assessment of the baseline, the long term variability, accelerations and decelerations of the fetal heart rate, currently represents one of the main tools for the antenatal surveillance of the fetal wellbeing. CTG has been compared to no intervention in a Cochrane review of four randomized control trials. No improvement in perinatal mortality was shown [65, 95] and currently there is no other evidence supporting the use of conventional CTG in FGR fetuses [65, 89]. Short-term variability (STV) can be detected only using cCTG and becomes abnormal in the case of advanced fetal deterioration [77]. Current evidence suggests that cCTG is sensitive in the detection of advanced fetal deterioration providing information similar to DV reverse A-wave for the short-term prediction of fetal death.

Uterine artery Doppler may predict poor outcome in FGR but does not provide information sufficiently sophisticated to be considered effective in the management of the FGR fetuses [89, 96–98].

Which parameter is used to monitor FGR fetuses is not a more important issue than how often these fetuses should be assessed. A stage-based management protocol suggested by Figueras et al. [94], recommends fetal

monitoring twice weekly up to 34 weeks if umbilical artery AEDF, every 24 to 48 h up to 30 weeks if reverse diastolic flow in the umbilical artery (REDV) or DV-PI > 95th centile, and every 12 to 24 h up to 26 weeks if spontaneous FHR decelerations, reduced STV (<3 ms) in the computerised cardiotocography, or reverse atrial flow in the DV.

There is no data as regards the decision for inpatient versus outpatient management of FGR fetuses. Most cases of isolated FGR are monitored in an outpatient setting even though the decision for inpatient monitoring can be taken on a subjective basis. Of note, 60–70% of cases of early FGR are associated with hypertensive complications of the pregnancy [3]. In such cases we believe that admission is advisable despite the lack of clinical data supporting this view.

### Timing of delivery

At present there is no effective intervention for FGR except delivery, and especially for early-onset FGR the timing is crucial and requires a balance between the risks of prematurity and the possibility of stillbirth and organ damage due to inadequate tissue perfusion [64, 90], unless severe maternal complications supervene [3, 88, 99].

Currently there is no consensus on what is the most appropriate trigger for delivery as the evaluation of the fetal status by Doppler indices and CTG cannot be assessed independently from the gestational age, which is the most significant determinant of both survival and intact survival, and fetal weight [90].

Though the GRIT study showed no clear benefit in delivering immediately or delaying delivery when a fetus is thought to be compromised, evidence from the TRUFFLE study shows how important it is to delay delivery in order to reduce the risk of cerebral palsy and poor neurodevelopmental outcome [79, 99] in this case based on deterioration in both the ductus venosus and STV from computerized CTG. However, this can be safely achieved only through protocols that integrate the best available evidence and reducing clinical practice variation [64].

Baschat et al. suggested the absent or reversed umbilical artery end diastolic velocity (AREDV) as the trigger for delivery, as it seems to have an independent impact on neurodevelopment from the late second trimester onward as representative of deepening hypoxemia [54], though this strategy was not tested in a prospective study.

The GRIT study was the first RCT which aimed to assess the timing for delivering FGR fetuses and concluded that “uncertainty” of the clinician as to whether deliver or not to deliver is related to the timing of delivery, which varied on average by only 4 days. Furthermore, fetuses with severe DV abnormalities at or beyond 28 weeks should be delivered after completion of steroids as there is

evidence that reversed A-wave in the DV increases the risk of intrauterine fetal death at any gestational age [99].

According to the stage-based management protocol suggested by Figueras et al. [94] delivery by Caesarean section should be recommended at or after 34 weeks in case of umbilical artery AEDV, at or after 30 weeks if umbilical artery REDF or DV-PI > 95th centile and at or after 26 weeks if spontaneous fetal heart rate (FHR) decelerations, reduced short-term variability (<3 ms) in the cCTG, or reverse atrial flow in the DV Doppler.

The TRUFFLE is the only randomized controlled study which has evaluated a standardized monitoring and delivery protocol focussed on computerized CTG and DV Doppler. The “late” DV group (absent or reversed A-wave) was associated with significant improvement in the rate of survival without impairment when compared to computerized CTG, and delivery was recommended in case of umbilical artery REDF between 30 and 32 weeks, umbilical artery AEDF between 32 and 34 weeks, or umbilical artery PI >95<sup>th</sup> centile beyond 34 weeks. Safety nets for the computerised CTG were used in the TRUFFLE protocol, and may have contributed to the excellent outcomes in term of mortality and survival without impairment [3, 87].

Despite accumulating evidence suggesting that cerebral redistribution, defined by a reduction in the MCA PI below the 5<sup>th</sup> centile or a reduction in the C-U ratio below the 2.5<sup>th</sup> centile, may not be an entirely protective phenomenon, currently there is no evidence to recommend delivery before 34 weeks in fetuses who show features of cerebral redistribution [45, 64, 94].

Regarding the mode of delivery, 97% of women in TRUFFLE had Caesarean deliveries, compared with 98 and 85% in the cohorts reported by Baschat and GRIT, respectively [3, 87, 88, 100, 101]. It is of note that no studies have evaluated the optimal mode of delivery in early FGR fetuses.

### Outcomes

Early growth restricted fetuses by definition carry at least one of the major risk factors for perinatal morbidity and mortality, *i.e.* low birthweight and prematurity. Early and late-onset FGR are both associated with poor short- and long-term neurodevelopmental outcome, and also with cardiovascular and metabolic complications particularly in case of birth weight <3<sup>rd</sup> centile and gestation at delivery <26 weeks [64, 93]. Additionally, the cause of the growth restriction can impact on the short and long term prognosis, so especially for severely early growth restricted fetuses it is important to identify the cause by offering karyotyping and viral screen [32, 90]. This can allow to distinguish between fetuses who are affected by true FGR, and those who are constitutionally small (SGA) but with a guarded

**Table 2** Short term survival across gestation at diagnosis<sup>a</sup>

Gestation at diagnosis	Survival N	Perinatal death (IUD + NND) N	Survival %	Perinatal death (IUD + NND) %
22–23 weeks	49	69	41%	59%
24–25 weeks	52	42	55%	45%
26–27 weeks	126	22	85%	15%
28–29 weeks	188	15	93%	7%
30–31 weeks	164	2	99%	1%

Source: Data has been collated and fused from TRUFFLE 2013 [3] and Lawin O'Brien et al [91]

IUD intrauterine death

NND neonatal death

<sup>a</sup>Terminations of pregnancy (TOP) excluded

prognosis, particularly if the birthweight is below the 3<sup>rd</sup> centile [102].

Few data exist regarding periviable growth restricted babies, a category which is commonly associated with poor outcome [92]. In 2014 Story et al [102] reviewed the outcomes of 20 FGR fetuses diagnosed <24 weeks and EFW <3<sup>rd</sup> centile reporting a 67% preterm delivery rate and a better than expected survival to neonatal discharge rate of 60%. Such surprisingly good outcomes were confirmed by recently published data from a wider UK cohort of 245 cases of periviable FGR fetuses who showed an overall 41% neonatal survival rate and a 15% rate of delivery beyond 36 weeks, concluding that at a periviable gestational age both SGA and FGR can present in similar ways, and differentiation at the earliest possible time is crucial to allow appropriate management and counseling [91].

After 26 weeks the best results in terms of short term and 2-year outcomes were reported by the TRUFFLE group [3, 87], with 8% overall mortality (3% beyond 30 weeks), 24% severe neonatal morbidity, and low rates of bronchopulmonary dysplasia and poor neurodevelopmental outcome despite including fetuses who were on average 1 week younger and 300 g lighter if compared to the other RCT (GRIT) conducted on FGR fetuses [88]. Overall 69% of the 503 included fetuses survived without

severe neonatal morbidity and these results were explained as a consequence of a more detailed and standardized protocol of surveillance. Allocation to delivery on the basis of absent/reversed A-wave in the DV accounted for a non significant increase in the stillbirth rate and a significant lower rate of abnormal neurodevelopmental outcome compared to the computerized CTG group, irrespective of the gestational age at inclusion [87]. According to Baschat et al. in-early onset FGR the nutritional and vascular restriction in placental function is limited with umbilical artery AREDV, and particularly reversed end-diastolic velocity is an independent risk factor for adverse motor and cognitive development [54]. Later in life no differences were reported in the rates of severe disability and individual domain scores between the two delivery arms in the GRIT study [86, 98] and results were comparable to other preterm cohorts without FGR [54]. Recently published data concerning short term survival of severe growth restricted fetuses across gestation at diagnosis and delivery are reported in Tables 2, 3 and in Figs. 1 and 2.

### Future directions

Delivery is acknowledged to be the only treatment for FGR at present and the most important studies have

**Table 3** Short term survival across gestation at delivery<sup>a,b</sup>

Gestation at delivery	Survival N	Perinatal death (IUD + NND) N	Survival %	Perinatal death (IUD + NND) %
22–23 weeks	1	7	13%	87%
24–25 weeks	0	30	0%	100%
26–27 weeks	51	52	49%	51%
28–29 weeks	141	27	84%	16%
30–31 weeks	173	10	95%	5%
32–33 weeks	111	5	96%	4%
>34 weeks	87	4	96%	4%

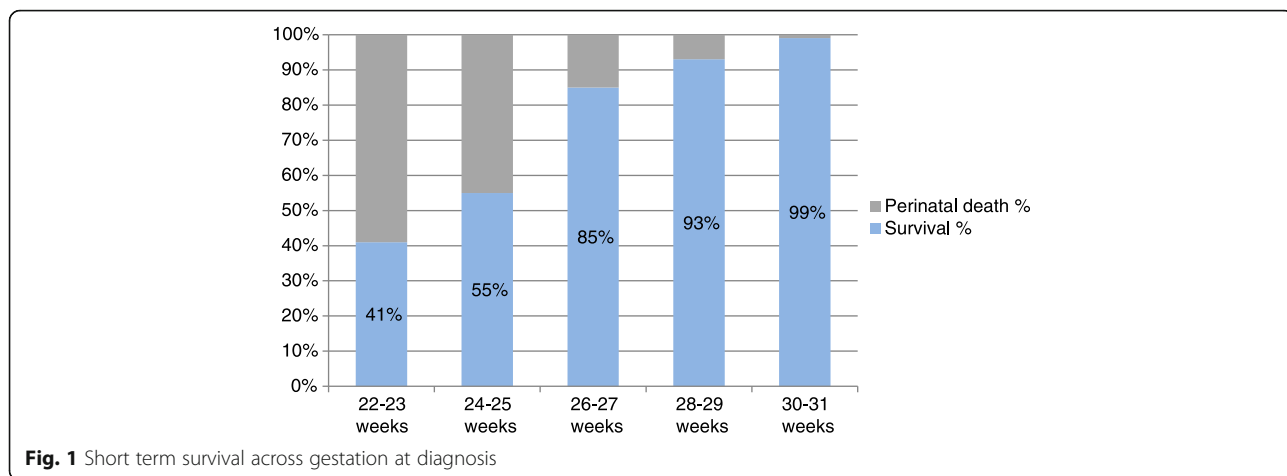
Source: Data has been collated and fused from TRUFFLE 2013 [3] and Lawin O'Brien et al [91]

IUD intrauterine death

NND neonatal death

<sup>a</sup>Lawin-O'Brien et al [91] 4 cases missing gestation at delivery

<sup>b</sup>Terminations of pregnancy (TOP) excluded



focused on how to monitor and when to deliver FGR fetuses in order to optimize the perinatal outcomes.

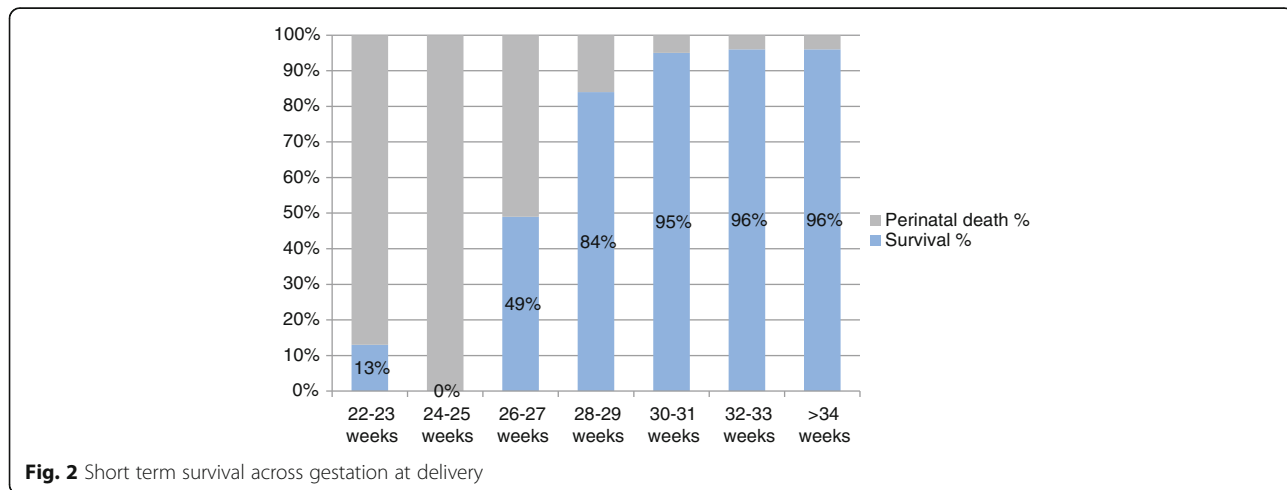
Currently there are no evidence-based therapies for early onset FGR but over the last decades it has been suggested that other approaches, namely nitric oxide (NO), Sildenafil and maternal plasma volume expansion may play a role in prolonging pregnancies and reducing Doppler deterioration in FGR fetuses [103–106].

Early FGR is associated with hypertensive disorders of the pregnancy and preeclampsia in up to 73 and 52% of the cases respectively [3]. It is hypothesized that the syndrome of pre-eclampsia stems from a failure of placental implantation and development [107] which leads to a failure in physiologic increase of uterine perfusion during pregnancy. Nevertheless, uteroplacental insufficiency is also a widely acknowledged cause of FGR. In 2001 Parra et al [103] demonstrated that in pregnancies complicated by FGR NO production is impaired if compared to normal and hypertensive cases, whereas more recent data suggest an increased NO production in FGR fetuses [108]. It is uncertain how and why NO pathways are abnormal in

FGR fetuses and, most importantly, no data have supported a significant improvement in perinatal outcomes in mothers treated with NO. On the other hand, some evidences have shown that in pregnancies complicated by hypertension and growth restriction the combined therapy consisting in plasma volume expansion with enriched physiological solution and NO donors can improve maternal hemodynamics, prolong the pregnancy and increase the birthweight [106].

Animal models of fetal growth restriction have demonstrated that the phosphodiesterase 5 inhibitor Sildenafil citrate increases birth weight and improves uteroplacental blood flow and there is also little evidence from a study done on humans that Sildenafil increases birthweight in pregnancies complicated by early-onset preeclampsia [109]. STRIDER is the acronym of an ongoing prospective individual participant data study which will add clinical information as to whether Sildenafil can be safely and effectively used in human pregnancies [104].

Last, but not least, studies conducted on sheep have shown that local treatment at the uteroplacental site with





the pro-angiogenic factor VEGF-A improves fetal growth in growth restricted ewes [110, 111]. VEGF-A treatment was associated with a significant and long term (at least 4 weeks) increase in bloodflow and reduction in contractility of the uterine arteries in both pregnant and non pregnant animals [112]. These findings give hope that VEGF-A gene therapy can reverse the impaired uteroplacental perfusion which is associated with most cases of FGR even in humans, however further studies on both animal and human models are needed before any clinical application could be contemplated.

## Conclusions

In summary, a conservative management focused on the identification of etiology in periviable growth restricted fetuses is recommended, as prognosis can vary widely despite similar ultrasound findings at diagnosis. Beyond 26 weeks the current evidence suggests that a detailed surveillance protocol integrating fetal ductus venosus Doppler and computerized CTG allows better outcomes and delivery only when one or both become abnormal.

## Abbreviations

ACOG: American College of Obstetrician and Gynecologists; AEDF: Umbilical artery absent end diastolic flow; AFP: Alfa fetoprotein; AGA: Appropriate for gestational age; Aol: Aortic isthmus; AREDF: Umbilical absent or reverse end diastolic flow; BMI: Body mass index; BPP: Biophysical profile; CPR: Cerebroplacental ratio; CTG: Cardiotocography; C-U ratio: Cerebro-umbilical ratio; DV: Ductus venosus; EFW: Estimated fetal weight; FGR: Fetal growth restriction; FHR: Fetal heart rate; hCG: Human chorionic gonadotropin; MCA: Middle cerebral artery; MPI: Myocardial performance index; NO: Nitric oxide; PAPP-A: Pregnancy associated plasma protein-A; PI: Pulsatility index; RCOG: Royal College of Obstetricians and Gynecologists; RCT: Randomised controlled trial; REDF: Umbilical artery reverse end diastolic flow; SGA: Small for gestational age; STV: Short term variability; VEGF-A: Vascular-endothelial growth factor-A

## Acknowledgements

CCL is supported by the National Institute for Health Research (NIHR) Biomedical Research Centre based at Imperial College Healthcare NHS Trust and Imperial College London.

## Funding

No financial support was received for this study.

## Availability of data and materials

All the studies included in this review are listed in the reference section.

## Authors' contributions

ADA and VB wrote the main text. FP and TF supervised Dr ADA and Dr VB work. CCL: comments and final review. All authors read and approved the final manuscript.

## Authors' information

ADA has recently completed his Specialty Training in Obstetrics and Gynecology at the University of Parma (head Prof Tiziana Frusca) and is currently PhD Student at the same University and Clinical Fellow in Fetal Medicine at the Centre for Fetal Care, Queen Charlotte's and Chelsea Hospital (Lead Dr C Lees). His main interests have focused on prenatal diagnosis and management of fetal growth restriction. VB has recently completed her Specialty Training in Obstetrics and Gynecology at the University of Brescia. Her main clinical interest has focused on maternal-fetal medicine. CCL, TF and FP are Senior Consultants in Maternal-Fetal Medicine. They all have taken part in the TRUFFLE Study, which is currently the largest available

randomized controlled trial on diagnosis, management and prognosis of severe early fetal growth restriction.

## Competing interests

The authors declare that they have no competing interests.

## Consent for publication

This is a review article. All the Authors give their consent for publication on *Maternal Health, Neonatology and Perinatology*.

## Ethics approval and consent to participate

Not required. This is a review article.

## Author details

<sup>1</sup>Centre for Fetal Care, Queen Charlotte's and Chelsea Hospital, Imperial College Healthcare NHS Trust, Du Cane Road, London W12 0HS, United Kingdom. <sup>2</sup>Department of Obstetrics & Gynecology, University of Parma, Parma, Italy. <sup>3</sup>Department of Obstetrics and Gynaecology, Maternal-Fetal Medicine Unit, University of Brescia, Brescia, Italy. <sup>4</sup>Department of Surgery and Cancer, Imperial College London, London, United Kingdom. <sup>5</sup>Department of Development and Regeneration, KU, Leuven, Belgium.

Received: 2 August 2016 Accepted: 27 December 2016

Published online: 18 January 2017

## References

- Alberry M, Soothill P. Management of fetal growth restriction. *Arch Dis Child Fetal Neonatal Ed.* 2007;92:62–7.
- Damodaram M, Story L, Kulinskaya E, Rutherford M, Kumar S. Early adverse perinatal complications in preterm growth-restricted fetuses. *Aust N Z J Obstet Gynaecol.* 2011;51:204–9.
- Lees C, Marlow N, Arabin B, Bilardo CM, Brezinka C, Derks JB, et al. Perinatal morbidity and mortality in early-onset fetal growth restriction: cohort outcomes of the trial of randomized umbilical and fetal flow in Europe (TRUFFLE). *Ultrasound Obstet Gynecol.* 2013;42:400–8.
- Gardosi J, Chang A, Kalyan B, Sahota D, Symonds EM. Customised antenatal growth charts. *Lancet.* 1992;339:283–7.
- Gardosi J, Giddings S, Buller S, Southam M, Williams M. Preventing stillbirths through improved antenatal recognition of pregnancies at risk due to fetal growth restriction. *Public Health.* 2014;128:698–702.
- Unterscheider J, Daly S, Geary MP, Kennelly MM, McAuliffe FM, O'Donoghue K, Hunter A, Morrison JJ, Burke G, Dicker P, Tully EC, Malone FD. Optimizing the definition of intrauterine growth restriction: the multicenter prospective PORTO Study. *Am J Obstet Gynecol.* 2013;208(4):290. e1-290 e6.
- Vasak B, Koenen SV, Koster MP, Hukkelhoven CW, Franx A, Hanson MA, Visser GH. Human fetal growth is constrained below optimal for perinatal survival. *Ultrasound Obstet Gynecol.* 2015;45:162–7.
- Mcintire DD, Bloom SL, Casey BM, Leveno KJ. Birth weight in relation to morbidity and mortality among newborn infants. *N Engl J Med.* 1999;340:1234–8.
- Jones RA, Robertson NR. Problems of the small for dates baby. *Clin Obstet Gynaecol.* 1984;11:499–524.
- Alkalay AL, Graham JM, Pomerance JJ. Evaluation of neonates born with intrauterine growth retardation: review and practice guidelines. *J Perinatol.* 1998;18:142–51.
- Yanney M, Marlow N. Paediatric consequences of fetal growth restriction. *Semin Fetal Neonatal Med.* 2004;9:411–8.
- Marlow N, Wolke D, Bracewell MA, Samara M, The Epicure Study Group. Neurologic and developmental disability at six years of age after extremely preterm birth. *N Engl J Med.* 2005;352:9–19.
- Walker DM, Marlow N. Neurocognitive outcome following fetal growth restriction. *Arch Dis Child Fetal Neonatal Ed.* 2008;93:322–5.
- Low J, Handley M, Burke S, et al. Association of intrauterine growth retardation and learning deficits at age 9 to 10 years. *AJOG.* 1992;162:1499.
- Robertson CT, Etches PC, Kyle M. Eight years school performance and growth of preterm, small for gestational age infants: a comparative study with subjects matched for birth weight or for gestational age. *J Pediatrics.* 1990;116:19.
- Tideman E, Marsal K, Ley D. Cognitive function in young adults following intrauterine growth restriction with abnormal fetal aortic blood flow. *Ultrasound Obstet Gynecol.* 2007;29:614–8.

17. Barker DJ, Osmond C, Golding J, Kuh D, Wadsworth ME. Growth in utero, blood pressure in childhood and adult life, and mortality from cardiovascular disease. *BMJ*. 1989;298:564–7.
18. Barker DJ. Fetal origins of coronary heart disease. *BMJ*. 1995;311:171–4.
19. Tintu A, Rouwet E, Verlohren S, Brinkmann J, Ahamd S, Crispi F, van Bilsen M, Carmeliet P, Staff AC, Tjwa M, Cetin I, Gratacos E, Hernandez-Andrade E, Hofstra L, Jacobs M, Lamers WH, Morano I, Safak E, Ahmed A, le Noble F. Hypoxia induces dilated cardiomyopathy in the chick embryo: mechanism, intervention, and long-term consequences. *PLoS One*. 2009;4:e5155.
20. Kiserud T, Kessler J, Ebbing C, Rasmussen S. Ductus venosus shunting in growth-restricted fetuses and the effect of umbilical circulatory compromise. *Ultrasound Obstet Gynecol*. 2006;28:143–9.
21. Leon DA, Lithell HO, Vagero D, Kouplova I, Mohsen R, Berglund L, Lithell UB, McKeigue PM. Reduced fetal growth rate and increased risk of death from ischemic heart disease: cohort study of 15,000 Swedish men and women born 1915–29. *BMJ*. 1998;317:241–5.
22. Rich-Edwards JW, Stampfer MJ, Manson JE, Rosner B, Hankinson SE, Colditz GA, Willet WC, Hennekens CH. Birth weight and risk of cardiovascular disease in a cohort of women followed up since 1976. *BMJ*. 1997;315:369–400.
23. Villar J, Altman DG, Purwar M, Noble JA, Knight HE, Ruyan P, Cheikh Ismail L, Barros FC, Lambert A, Papageorgiou AT, Carvalho M, Jaffer YA, Bertino E, Gravett MG, Bhutta SH K, the International Fetal and Newborn Growth Consortium for the 21st century (INTERGROWTH-21ST). The objectives, design and implementation of the INTERGROWTH-21<sup>ST</sup> Project. *BJOG*. 2013;120 Suppl 2:9–26.
24. Sibai BM, Abdella TN, Anderson GD. Pregnancy outcome in 211 patients with mild chronic hypertension. *Obstet Gynecol*. 1983;61(5):571–6.
25. McCowan L, Horgan RP. Risk factors for small for gestational age infants. *Best Pract Res Clin Obstet Gynaecol*. 2009;23:779–93.
26. Langer O, Levy J, Brustman L, Anyaegunam A, Merkatz R, Divon M. Glycemic control in gestational diabetes mellitus—how tight is tight enough: small for gestational age versus large for gestational age? *Am J Obstet Gynecol*. 1989; 161(3):646–53.
27. Alfirevic Z, Roberts D, Martlew V. How strong is the association between maternal thrombophilia and adverse pregnancy outcome? A systematic review. *Eur J Obstet Gynecol Reprod Biol*. 2002;101(1):6–14.
28. Odibo AO, Nelson D, Stamilio DM, Sehdev HM, Macones GA. Advanced maternal age is an independent risk factor for intrauterine growth restriction. *Am J Perinatol*. 2006;23:325–8.
29. Kramer MS. Determinants of low birth weight: methodological assessment and meta-analysis. *Bull World Health Organ*. 1987;65:663–737.
30. Alexander GR, Wingate MS, Mor J, Boulet S. Birth outcomes of Asian–Indian–americans. *Int J Gynaecol Obstet*. 2007;97:215–20.
31. Shah PS. Knowledge Synthesis Group on Determinants of 45. LBW/PT Births. Parity and low birth weight and pre-term birth: a systematic review and meta-analyses. *Acta Obstet. Gynecol Scand*. 2010;89:862–75.
32. Blumenshine P, Egarter S, Barclay CJ, Cubbin C, Braveman PA. Socioeconomic disparities in adverse birth outcomes: a systematic review. *Am J Prev Med*. 2010;39:263–72.
33. Han Z, Mulla S, Beyene J, Liao G, McDonald SD, Knowledge Synthesis Group. Maternal underweight and the risk of preterm birth and low birth weight: a systematic review and meta-analyses. *Int J Epidemiol*. 2011;40:65–101.
34. Jaddoe VW, Bakker R, Hofman A, Mackenbach JP, Moll HA, Steegers EA, et al. Moderate alcohol consumption during pregnancy and the risk of low birth weight and preterm birth. The generation R study. *Ann Epidemiol*. 2007;17:834–40.
35. Gouin K, Murphy K, Shah PS. Knowledge Synthesis Group on Determinants of LBW/PT Births. Effects of cocaine use during pregnancy on low birthweight and preterm birth: systematic review and metaanalyses. *Am J Obstet Gynecol*. 2011;204(340):1–12.
36. McCowan LM, Dekker GA, Chan E, Stewart A, Chappell LC, Hunter M, et al. Spontaneous preterm birth and small for gestational age infants in women who stop smoking early in pregnancy: prospective cohort study. *BMJ*. 2009; 338:b1081.
37. Jackson RA, Gibson KA, Croughan MS, Wu YW. Perinatal outcomes in singletons following in vitro fertilization: a meta-analysis. *Obstet Gynecol*. 2004;103:551–63.
38. Boers KE, Vijgen SM, Bijlenga D, van der Post JA, Bekedam DJ, Kwee A, van der Salm PC, van Pampus MG, Spaanderman ME, de Boer K, Duvekot JJ, Bremer HA, Hasaart TH, Delemarre FM, Bloemenkamp KW, van Meir CA, Willekes C, Wijnen EJ, Rijken M, le Cessie S, Roumen FJ, Thornton JG, van Lith JM, Mol BW, Scherjon SA, DIGITAT study group. Induction versus expectant monitoring for intrauterine growth restriction at term: randomised equivalence trial (DIGITAT). *BMJ*. 2010;341:c7087.
39. Lausman A, Kingdom J, Maternal Fetal Medicine Committee, Gagnon R, Basso M, Bos H, Crane J, Davies G, Delisle MF, Hudon L, Menticoglou S, Mundle W, Ouellet A, Pressey T, Pylypjuk C, Roggensack A, Sanderson F. Intrauterine growth restriction: screening, diagnosis and management. *J Obstet Gynaecol Can*. 2013;35(8):741–57.
40. American College of Obstetricians and Gynecologists. ACOG Practice bulletin no. 134: fetal growth restriction. *Obstet Gynecol*. 2013;121:1122–33.
41. RCOG Green Top Guideline No.31. The Investigation and Management of the Small-for-Gestational Age Fetus. January 2014.
42. Growth restriction in Oski's paediatrics. McMillan JAF, DeAngelis CD, Jones MD, editors. Principles and practice. Philadelphia: Lippincott Williams and Wilkins, 2006.
43. Gordijn SJ, Beune IM, Thilaganathan B, Papageorgiou A, Baschat AA, Baker PN, Silver RM, Wynia K, Ganzevoort W. Consensus definition of fetal growth restriction: a Delphi procedure. *Ultrasound Obstet Gynecol*. 2016;48(3):333–9.
44. Turan S, Miller J, Baschat AA. Integrated testing and management in fetal growth restriction. *Semin Perinatol*. 2008;32:194–2000.
45. Baschat AA. Fetal growth restriction – from observation to intervention. *J Perinat Med*. 2010;38:239–46.
46. Savchev S, Figueras F, Sanz-Cortes M, Cruz-Lemini M, Triunfo S, Botet F, Gratacos E. Evaluation of an optimal gestational age cut-off for the definition of early- and late-onset fetal growth restriction. *Fetal Diagn Ther*. 2014;36(2):99–105.
47. Crovetto F, Crispi F, Scaccocchio E, Mercade I, Meler E, Figueras F, Gratacos E. Performance of first-trimester integrated screening for early and late small for gestational age newborns. *Ultrasound Obstet Gynecol* 2013 (E-pub ahead of print).
48. Hadlock FP, Harrist RB, Sharman RS, Deter RL, Park SK. Estimation of fetal weight with the use of head, body, and femur measurements—a prospective study. *Am J Obstet Gynecol*. 1985;151:333–7.
49. Brenner WE, Edeman DA, Hendricks CH. A standard of fetal growth for the United States of America. *Am J Obstet Gynecol*. 1976;126:555–64.
50. Zhang J, Bowes Jr WA. Birth-weight-for gestational-age patterns by race, sex, and parity in the United States population. *Obstet Gynecol*. 1995;86:200–8.
51. Gardosi J, Mongelli M, Wilcox M, Chang A. An adjustable fetal weight standard. *Ultrasound Obstet Gynecol*. 1995;6:168–74.
52. Resnik R. to customize or not to customize: that is the question. *Paediatr Perinat Epidemiol*. 2011;25:17–9.
53. Baschat AA, Weiner CP. Umbilical artery Doppler screening for detection of the small fetus in need of antepartum surveillance. *Am J Obstet Gynecol*. 2000;182:154–8.
54. Baschat AA. Neurodevelopment after Fetal Growth Restriction. *Fetal Diagn Ther*. 2014;36:136–42.
55. Nossen JS, Morris RK, ter Riet G, Mol BW, van der Post JA, Coomarasamy A, et al. Use of uterine artery Doppler ultrasonography to predict pre-eclampsia and intrauterine growth restriction: a systematic review and bivariate meta-analysis. *CMAJ*. 2008;178:701–11.
56. Maulik D, Frances Evans J, Ragolia L. Fetal growth restriction: pathogenic mechanisms. *Clin Obstet Gynecol*. 2006;49:219–27.
57. Pilalis A, Souka AP, Antsaklis P, Daskalakis G, Papantoniou N, Mesogitis S, et al. Screening for pre-eclampsia and fetal growth restriction by uterine artery Doppler and PAPP-A at 11–14 weeks gestation. *Ultrasound Obstet Gynecol*. 2007;29:135–40.
58. Filippi E, Staughton J, Peregrine E, Jones P, Huttly W, Peebles DM, et al. Uterine artery Doppler and adverse pregnancy outcome in women with extreme levels of fetoplacental proteins used for Down syndrome screening. *Ultrasound Obstet Gynecol*. 2011;37:520–7.
59. Dane B, Dane C, Kiray M, Cetin A, Koldas M, Erginbas M. Correlation between first-trimester maternal serum markers second trimester uterine artery doppler indices and pregnancy outcome. *Gynecol Obstet Invest*. 2010;70:126–31.
60. Costa SL, Proctor L, Dodd JM, Toal M, Okun N, Johnson JA, et al. 83. Screening for placental insufficiency in high risk pregnancies: is earlier better? *Placenta*. 2008;29:1034–40.
61. Harman CR, Baschat AA. Comprehensive assessment of fetal wellbeing: which Doppler tests should be performed? *Curr Opin Obstet Gynecol*. 2003; 15:147–57.
62. Talmor A, Daemen A, Murdoch E, Missfelder-Lobos H, Timmerman D, Bourne T, Giussani DA, Lees C. Defining the relationship between fetal

- Doppler indices, abdominal circumference and growth rate in severe fetal growth restriction using functional linear discriminant analysis. *J R Soc Interface*. 2013;10(88):20130376.
63. Flood K, Unterscheider J, Daly S, Geary MP, Kennelly MM, McAuliffe FM, O'Donoghue K, Hunter A, Morrison JJ, Burke G, Dicker P, Tully EC, Malone FD. The role of brain sparing in the prediction of adverse outcomes in intrauterine growth restriction: results of the multicenter PORTO study. *Am J Obstet Gynecol*. 2014;211:288. e1-5.
  64. Figueras F, Gratacos E. Update on the Diagnosis and Classification of Fetal Growth Restriction and Proposal of a Stage-Based Management Protocol. *Fetal Diagn Ther*. 2014;36:86-98.
  65. Alfirevic Z, Stampalija T, Gyte GM. Fetal and umbilical Doppler ultrasound in high-risk pregnancies. *Cochrane Database Syst Rev*. 2013;11:CD007529.
  66. Arduini D, Rizzo G, Romanini C. The development of abnormal heart rate pattern after absent end diastolic velocity in umbilical artery: analysis of risk factors. *Am J Obstet Gynecol*. 1993;168:43.
  67. Brar H, Platt L. Reverse end diastolic flow velocity on umbilical artery velocimetry in high pregnancies: an ominous finding with adverse pregnancy outcome. *Am J Obstet Gynecol*. 1988;159:559.
  68. Valcamonico A, Danti L, Frusca T, Soregaroli M, Zucca S, Abrami F, Tiberti A. Absent end diastolic velocity in umbilical artery: risk of neonatal morbidity and brain damage. *Am J Obstet Gynecol*. 1994;170:796.
  69. Eixarch E, et al. Neurodevelopmental outcome in 2-year-old infants who were small-for-gestational age term fetuses with cerebral blood flow redistribution. *Ultrasound Obstet Gynecol*. 2008;32(7):894-9.
  70. Hershkovitz R, et al. Fetal cerebral blood flow redistribution in late gestation: identification of compromise in small fetuses with normal umbilical artery Doppler. *Ultrasound Obstet Gynecol*. 2000;15(3):209-12.
  71. Cruz-Martinez R, et al. Longitudinal brain perfusion changes in near-term small-for-gestational-age fetuses as measured by spectral Doppler indices or by fractional moving blood volume. *Am J Obstet Gynecol*. 2010;203(1):42. e1-e6.
  72. Figueras F, Savchev S, Triunfo S, Croveto F, Gratacos E. An integrated model with classification criteria to predict small-for-gestational-age fetuses at risk of adverse perinatal outcome. *Ultrasound Obstet Gynecol*. 2015;45(3):279-85.
  73. Parra-Saavedra M, Croveto F, Triunfo S, Savchev S, Peguero A, Nadal A, Gratacos E, Figueras F. Association of Doppler parameters with placental signs of underperfusion in late-onset small-for-gestational-age pregnancies. *Ultrasound Obstet Gynecol*. 2014;44(3):330-7.
  74. Ferrazzi E, Bozzo M, Rigano S, Bellotti M, Morabito A, Pardi G, Battaglia FC, Galan HL. Temporal sequence of abnormal Doppler changes in the peripheral and central circulatory systems of the severely growth-restricted fetus. *Ultrasound Obstet Gynecol*. 2002;19:140-6.
  75. Cosmi E, et al. Doppler, cardiocytography, and biophysical profile changes in growth-restricted fetuses. *Obstet Gynecol*. 2005;106(6):1240-5.
  76. Hecher K, Bilardo CM, Stigter RH, Ville Y, Hackelöer BJ, Kok HJ, Senat MV, Visser GHA. Monitoring of fetuses with intrauterine growth restriction: a longitudinal study. *Ultrasound Obs Gyn*. 2001;18:564-70.
  77. Baschat AA, Gembruch U, Harmann CR. The sequence of changes in Doppler and biophysical parameters as severe fetal growth restriction worsens. *Ultrasound Obstet Gynecol*. 2001;18(6):571-7.
  78. Francisco RPV, Miyadahira S, Zugaib M. Predicting pH at birth in absent or reversed end-diastolic velocity in the umbilical arteries. *Obstet Gynecol*. 2006;107:1042-8.
  79. Schwarze A, et al. Qualitative venous Doppler flow waveform analysis in preterm intrauterine growth-restricted fetuses with ARED flow in the umbilical artery-correlation with short-term outcome. *Ultrasound Obstet Gynecol*. 2005;25(6):573-9.
  80. Bilardo CM, Wolf H, Stigter RH, Ville Y, Baez E, Visser GHA, Hecher K. Relationship between monitoring parameters and perinatal outcome in severe, early intrauterine growth restriction. *Ultrasound Obstet Gynecol*. 2004;23:119-25.
  81. Rizzo G, Arduini D, Romanini C, et al. Doppler echocardiographic assessment of atrioventricular velocity waveforms in normal and small for gestational age fetuses. *Br J Obstet Gynaecol*. 1988;95:65.
  82. Rizzo G, Arduini D, Romanini C, et al. Doppler echocardiographic evaluation of time to peak velocity in the aorta and pulmonary artery of small for gestational age fetuses. *Br J Obstet Gynaecol*. 1990;97:603.
  83. Del Río M, Martínez JM, Figueras F, Bennisar M, Olivella A, Palacio M, Coll O, Puerto B, Gratacos E. Doppler assessment of the aortic isthmus and perinatal outcome in preterm fetuses with severe intrauterine growth restriction. *Ultrasound Obstet Gynecol*. 2008;31(1):41-7.
  84. Fouron JC, Gosseli J, Raboisson MJ, Lamoureux J, Tison CA, Fouron C, Hudon L. The relationship between an aortic isthmus blood flow velocity and the postnatal neurodevelopmental status of fetuses with placental circulatory insufficiency. *AJOG*. 2005;192:497-503.
  85. Cruz-Martinez R, Figueras F, Benavides-Serralde A, Crispi F, Hernandez-Andrade E, Gratacos E. Sequence of changes in myocardial performance index in relation to aortic isthmus and ductus venosus Doppler in fetuses with early-onset intrauterine growth restriction. *Ultrasound Obstet Gynecol*. 2011;38(2):179-84.
  86. Hassan WA, Brockelsby J, Alberry M, Fanelli T, Wladimiroff J, Lees CC. Cardiac function in early onset small for gestational age and growth restricted fetuses. *Eur J Obstet Gynecol Reprod Biol*. 2013;171(2):262-5.
  87. Lees CC, Marlow N, van Wassenaer-Leemhuis A, Arabin B, Bilardo CM, Brezinka C, Calvert S, Derks JB, Diemert A, Duvekot JJ, Ferrazzi E, Frusca T, Ganzevoort W, Hecher K, Martinelli P, Ostermayer E, Papageorgiou AT, Schlembach D, Schneider KT, Thilaganathan B, Todros T, Valcamonico A, Visser GH, Wolf H, TRUFFLE study group. 2 year neurodevelopmental and intermediate perinatal outcomes in infants with very preterm fetal growth restriction (TRUFFLE): a randomised trial. *Lancet*. 2015;385(9983):2162-72.
  88. GRIT Study Group. A randomised trial of timed delivery for the compromised preterm fetus: short term outcomes and Bayesian interpretation. *BJOG*. 2003; 110(1):27-32.
  89. Savchev S, Figueras F, Cruz-Martinez R, Illa M, Botet F, Gratacos E. Estimated weight centile as a predictor of perinatal outcome in small-for gestational-age pregnancies with normal fetal and maternal Doppler indices. *Ultrasound Obstet Gynecol*. 2012;39:299-303.
  90. Raju TN, Mercer BM, Burchfield DJ, Joseph Jr GF. Periviable birth: executive summary of a joint workshop by the Eunice Kennedy Shriver National Institute of Child Health and Human Development, Society for Maternal-Fetal Medicine, American Academy of Pediatrics, and American College of Obstetricians and Gynecologists. *Obstet Gynecol*. 2014;123(5):1083-96.
  91. Lawin-O'Brien AR, Dall'Asta A, Knight C, Sankaran S, Scala C, Khalil A, Bhide A, Heggarty S, Rakow A, Pasupathy D, Papageorgiou AT, Lees CC. Short-term outcome of periviable small-for-gestational-age babies: is our counseling up to date? *Ultrasound Obstet Gynecol*. 2016;48(5):636-41.
  92. Visser GH, Bilardo CM, Lees C. Fetal growth restriction at the limits of viability. *Fetal Diagn Ther*. 2014;36(2):162-5.
  93. DeVore GR. The importance of the cerebroplacental ratio in the evaluation of fetal well-being in SGA and AGA fetuses. *Am J Obstet Gynecol*. 2015;213(1):5-15.
  94. Figueras F, Gratacos E. Stage-based approach to the management of fetal growth restriction. *Prenat Diagn*. 2014;34:655-9.
  95. Alfirevic Z, Neilson JP. Doppler ultrasonography in high-risk pregnancies: Systematic review with meta-analysis. *Am J Obstet Gynecol*. 1995;172(5):1379-87.
  96. Grivell RM, Wong L, Bhatia V. Regimens of fetal surveillance for impaired fetal growth. *Cochrane Database Syst Rev*. 2012;6:CD007113.
  97. Severi FM, Bocchi C, Visentin A, Falco P, Cobellis L, Florio P, Zagonari S, Pilu G. Uterine and fetal cerebral Doppler predict the outcome of third-trimester small-for-gestational age fetuses with normal umbilical artery Doppler. *Ultrasound Obstet Gynecol*. 2002;19:225-8.
  98. Ghosh GS, Gudmundsson S. Uterine and umbilical artery Doppler are comparable in predicting perinatal outcome of growth-restricted fetuses. *BJOG*. 2009;116:424-30.
  99. Vergani P, Roncaglia N, Andreotti C, Arreghini A, Teruzzi M, Pezzullo JC, Ghidini A. Prognostic value of uterine artery Doppler velocimetry in growth-restricted fetuses delivered near term. *Am J Obstet Gynecol*. 2002;187:932-6.
  100. Thornton JG, Hornbuckle J, Vail A, Spiegelhalter DJ, Levene M, GRIT study group. Infant wellbeing at 2 years of age in the Growth Restriction Intervention Trial (GRIT): multicentred randomised controlled trial. *Lancet*. 2004;364(9433):513-20.
  101. Baschat AA, Cosmi E, Bilardo CM, Wolf H, Berg C, Rigano S, Germer U, Moyano D, Turan S, Hartung J, Bhide A, Muller T, Bower S, Nicolaidis KH, Thilaganathan B, Gembruch U, Ferrazzi E, Hecher K, Galan HL, Harman CR. Predictors of neonatal outcome in early-onset placental dysfunction. *Obstet Gynecol*. 2007;109:253-61.
  102. Story L, Sankaran S, Mullins E, Tan S, Russell G, Kumar S, Kyle P. Survival of pregnancies with small for gestational age detected before 24 weeks gestation. *Eur J Obstet Gynecol Reprod Biol*. 2015;188:100-3.
  103. Parra MC, Lees C, Mann GE, Pearson JD, Nicolaidis KH. Vasoactive mediator release by fetal endothelial cells in intrauterine growth restriction and preeclampsia. *Am J Obstet Gynecol*. 2001;184(3):497-502.

104. Ganzevoort W, Alfircic Z, von Dadelszen P, Kenny L, Papageorghiou A, van Wassenaer-Leemhuis A, Gluud C, Mol BW, Baker PN. STRIDER: Sildenafil Therapy In Dismal prognosis Early-onset intrauterine growth Restriction—a protocol for a systematic review with individual participant data and aggregate data meta-analysis and trial sequential analysis. *Syst Rev.* 2014;3:23.
105. Vasapollo B, Valensise H, Novelli GP, Altomare F, Galante A, Arduini D. Abnormal maternal cardiac function precedes the clinical manifestation of fetal growth restriction. *Ultrasound Obstet Gynecol.* 2004;24(1):23–9.
106. Valensise H, Vasapollo B, Novelli GP, Giorgi G, Verallo P, Galante A, Arduini D. Maternal and fetal hemodynamic effects induced by nitric oxide donors and plasma volume expansion in pregnancies with gestational hypertension complicated by intrauterine growth restriction with absent end-diastolic flow in the umbilical artery. *Ultrasound Obstet Gynecol.* 2008;31(1):55–64.
107. Lees C, Valensise H, Black R, Harrington K, Byiers S, Romanini C, Campbell S. The efficacy and fetal-maternal cardiovascular effects of transdermal glyceryl trinitrate in the prophylaxis of pre-eclampsia and its complications: a randomized double-blind placebo-controlled trial. *Ultrasound Obstet Gynecol.* 1998;12(5):334–8.
108. Pisaneschi S, Strigini FA, Sanchez AM, Begliuomini S, Casarosa E, Ripoli A, Ghirri P, Boldrini A, Fink B, Genazzani AR, Coceani F, Simoncini T. Compensatory feto-placental upregulation of the nitric oxide system during fetal growth restriction. *PLoS One.* 2012;7(9):e45294.
109. Samangaya RA, Mires G, Shennan A, Skillern L, Howe D, McLeod A, Baker PN. A randomised, double-blinded, placebo-controlled study of the phosphodiesterase type 5 inhibitor sildenafil for the treatment of preeclampsia. *Hypertens Pregnancy.* 2009;28(4):369–82.
110. Eremia SC, de Boo HA, Bloomfield FH, Oliver MH, Harding JE. Fetal and amniotic insulin-like growth factor-I supplements improve growth rate in intrauterine growth restriction fetal sheep. *Endocrinology.* 2007;148:2963–72.
111. David AL, Torondel B, Zachary I, Wigley V, Abi-Nader K, Mehta V, et al. Local delivery of VEGF adenovirus to the uterine artery increases vasorelaxation and uterine blood flow in the pregnant sheep. *Gene Ther.* 2008;15:1344–50.
112. Mehta V, Abi-Nader KN, Peebles DM, Benjamin E, Wigley V, Torondel B, Filippi E, Shaw SW, Boyd M, Martin J, Zachary I, David AL. Long-term increase in uterine blood flow is achieved by local overexpression of VEGF-A(165) in the uterine arteries of pregnant sheep. *Gene Ther.* 2012;19(9):925–35.

Submit your next manuscript to BioMed Central and we will help you at every step:

- We accept pre-submission inquiries
- Our selector tool helps you to find the most relevant journal
- We provide round the clock customer support
- Convenient online submission
- Thorough peer review
- Inclusion in PubMed and all major indexing services
- Maximum visibility for your research

Submit your manuscript at  
[www.biomedcentral.com/submit](http://www.biomedcentral.com/submit)

