

Endocrine

IN VITRO ANTITUMOR ACTIVITY OF PROGESTERONE IN HUMAN ADRENOCORTICAL CARCINOMA

--Manuscript Draft--

Manuscript Number:	ENDO-D-18-00620R1	
Full Title:	IN VITRO ANTITUMOR ACTIVITY OF PROGESTERONE IN HUMAN ADRENOCORTICAL CARCINOMA	
Article Type:	Original Article	
Corresponding Author:	Alfredo Berruti Azienda Ospedaliera Spedali Civili di Brescia and University of Brescia ITALY	
Corresponding Author Secondary Information:		
Corresponding Author's Institution:	Azienda Ospedaliera Spedali Civili di Brescia and University of Brescia	
Corresponding Author's Secondary Institution:		
First Author:	Martina Fragni	
First Author Secondary Information:		
Order of Authors:	Martina Fragni	
	Chiara Fiorentini	
	Elisa Rossini	
	Simona Fisogni	
	Sara Vezzoli	
	Sara A Bonini	
	Cristina Dalmiglio	
	Salvatore Grisanti	
	Guido A.M. Tiberio	
	Melanie Claps	
	Deborah Cosentini	
	Valentina Salvi	
	Daniela Bosisio	
	Massimo Terzolo	
	Mariacristina Missale	
	Fabio Facchetti	
	Maurizio Memo	
	Alfredo Berruti	
	Sandra Sigala	
Order of Authors Secondary Information:		
Funding Information:	Associazione Italiana per la Ricerca sul Cancro (IG17678)	Prof Massimo Terzolo
	Associazione Italiana per la Ricerca sul Cancro (IG14411)	Prof. Alfredo Berruti

	Fondazione Camillo Golgi (not applicable)	Prof. Alfredo Berruti
	Private Donations (not applicable)	Prof. Alfredo Berruti
Abstract:	<p>Purpose. The management of patients with adrenocortical carcinoma (ACC) is challenging. As mitotane and chemotherapy show limited efficacy, there is an urgent need to develop therapeutic approaches. The aim of this study was to investigate the antitumor activity of progesterone and explore the molecular mechanisms underlying its cytotoxic effects in the NCI-H295R cell line and primary cell cultures derived from ACC patients.</p> <p>Methods. Cell viability, cell cycle and apoptosis were analyzed in untreated and progesterone-treated ACC cells. The ability of progesterone to affect the Wnt/β-catenin pathway in NCI-H295R cells was investigated by immunofluorescence. Progesterone and mitotane combination experiments were also performed to evaluate their interaction on NCI-H295R cell viability.</p> <p>Results. We demonstrated that progesterone exerted a concentration-dependent inhibition of ACC cell viability. Apoptosis was the main mechanism, as demonstrated by a significant increase of apoptosis and cleaved-Caspase-3 levels. Reduction of β-catenin nuclear translocation may contribute to the progesterone cytotoxic effect. The progesterone antineoplastic activity was synergically increased when mitotane was added to the cell culture medium.</p> <p>Conclusions. Our results show that progesterone has antineoplastic activity in ACC cells. The synergistic cytotoxic activity of progesterone with mitotane provides the rationale for testing this combination in a clinical study.</p>	
Response to Reviewers:	<p>Reviewer #1:</p> <p>1) Introduction: is there any information on whether mifepristone also blocks the membranous progesterone receptors? Mifepristone is generally identified as a "classical" progesterone receptor (PR) antagonist because it forms complexes with PR and its hormonal regulatory elements within DNA (J Biol Chem 271:1209-1217, 1996). Its mechanism as a glucocorticoid and progesterone receptor antagonist was discovered about 40 years ago, and then found to be an androgen receptor antagonist as well (Expert Opin Pharmacother 11:481-488, 2010). However, when targeting cells outside the reproductive tract, the progesterone antagonistic activity of mifepristone is less clear (Hum Reprod 24:1968-1975, 2009). The role of mifepristone in modulating the effect of progesterone has become even more complex with the identification of progesterone membrane receptors (mPRs). This "class" of receptors is still being studied, and its different components, roles and agonist and antagonist drugs are still being identified. Indeed, non-genomic effects of mifepristone, as agonist/antagonist of progesterone, were observed in different cell lines (Anticancer Res 30:4835-4840, 2010; Anticancer Res 29:1047-1052, 2009; Hum Reprod 24:1968-1975, 2009), included cells from the Central Nervous System, such as Cerebellar Purkinje cells, where it has been demonstrated that both PRs (genomic effects) and mPRs (PGRMC1 included) (non-genomic effects) are involved in the regulation of neurosteroidogenesis, through the action of both progesterone and mifepristone, this latter acting as agonist of mPRs in mature cerebellar Purkinje cells (Cell. Mol. Life Sci 71:1723-1740, 2014). Despite these intriguing findings, the mechanism of actions of these non-genomic effects is not yet completely understood because mifepristone seems to display no binding affinity for mPRs (Endocrinology 148: 705-718, 2007).</p> <p>2) Page 9: P values need to be provided for all results of apoptosis assays - was % of apoptotic cells at each time point significantly different to controls? According to the Reviewer observation, P values are now reported in the revised Ms (page 9-10, lines 215-223). Exposure of NCI-H295R cells to 25 μM progesterone for 2, 4 and 6 days, significantly increased the number of apoptotic cells: P < 0.05; P < 0.001 and P < 0.001, respectively.</p> <p>3) Page 9: Have the authors tried progesterone treatment on the non-steroidogenic ACC cell line SW13? We agree to the Reviewer's point and we explored the effect of progesterone exposure in the SW13 cells: SW13 cells expressed mPRs and PRGCM1, while were devoid of PgRs. Exposure of increasing concentrations of progesterone induced a non concentration-dependent decrease of SW13 cell viability, suggesting a role of membrane progesterone receptors in mediating this effect. Results are now reported in</p>	

Supplemental Figure 4, and commented at page 12, lines 274-284. This is an intriguing result, that deserves to be deepened with further experiments, in order to establish the exact contribution of the different progesterone receptor components in inducing reduction of cell viability.

The progesterone mechanism of action thus becomes very complex, also in light of the evidence showing a different effect of progesterone, depending on many variables, such as the type of cells, the genomic and/or non genomic effects linked to the progesterone receptor expression and the concentration of hormone present (reviewed in Expert Rev Endocrinol Metab. 12(3):187-197, 2017). Accordingly, the non steroidogenic SW13 cell line represents a different cell phenotype compared to NCI-H295R cells, as it has been established from a grade IV primary small cell carcinoma in the adrenal cortex, with their exact histopathologic characteristics still under investigation (Mol Cell Endocrinol. 351(1):58-65, 2012).

Although these preliminary results are of interest, they are outside the main topic of this Ms and, indeed, they will be the subject of experiments currently underway in the laboratory. This point is now underlined in the Ms: page 13, lines 295-308).

4) Page 10: The numerical result, including p value, should be quoted for the reported increase in cells in sub-G0 phase

According to the Reviewer suggestion, the numerical result of cells in sub-G0 phase, and P value, are now reported in the revised Ms (page 10, line 230-231).

5) Page 10: Were any other of the kinases that are reported as targets of mPgR tested?

In the present Ms, experiments measuring Erk and phospho-Erk was conducted only to investigate whether the mPRs expressed by NCI-H295R cells were functionally active after stimulation with progesterone itself; therefore we measured the expression of only one of the kinases that are part of the non-genomic progesterone effects. We are aware that there are numerous intracellular pathways involved, as demonstrated in several works and well revised in the paper of Segars and coworkers (Trends Endocrinol. Metab. 28: 656-668, 2017); however, as above pointed out, the characterization of the contribution of the different progesterone receptor components in mediating its cytotoxic effect in ACC cells is beyond the scope of this work. Accordingly, these observations deserve an experimental investigation that is currently underway in the laboratory.

6) Has progesterone been measured in the plasma of the 5 ACC patients whose tumours were used for the primary culture work?

We did not measure the progesterone levels in patients.

7) Clinical studies employing steroid profiling (e.g. Arlt et al, JCEM 2011; Kerkhofs et al, Horm Cancer 2015) have revealed that most steroid-producing ACCs are associated with excessive secretion of progesterone, yet most epidemiological studies also suggest that steroidogenic ACCs have a more aggressive clinical course than their non-secreting counterparts. How do the authors reconcile their findings with these clinical observations?

The Reviewer is right, hormone hypersecretion as a whole is associated with poorer prognosis in ACC patients, however this negative relationship was observed for cortisol hypersecretion either alone or associated with androgens. We have observed that ACC patients with pure hyperandrogenism have a better prognosis as compared with cortisol secreting or non secreting patients (Berruti et al. Endocr Relat Cancer 2005). To our knowledge no data are available on the prognostic role of progesterone receptor and circulating progesterone levels in ACC.

[Click here to view linked References](#)

1 **IN VITRO ANTITUMOR ACTIVITY OF PROGESTERONE IN HUMAN**
2 **ADRENOCORTICAL CARCINOMA.**

3
4 3 Martina Fragni¹, Chiara Fiorentini¹, Elisa Rossini¹, Simona Fisogni², Sara Vezzoli¹, Sara A. Bonini¹,
5
6
7 4 Cristina Dalmiglio³, Salvatore Grisanti³, Guido A.M. Tiberio⁴, Melanie Claps³, Deborah Cosentini³,
8
9 5 Valentina Salvi⁵, Daniela Bosisio⁵, Massimo Terzolo⁶, Cristina Missale¹, Fabio Facchetti², Maurizio
10
11
12 6 Memo¹, Alfredo Berruti³, Sandra Sigala¹

13
14 7
15 8 ¹ Section of Pharmacology, Department of Molecular and Translational Medicine, University of
16
17 9 Brescia, Brescia, Italy.

18
19 10 ² Pathology Unit, Department of Molecular and Translational Medicine, University of Brescia at
20
21 11 ASST Spedali Civili di Brescia, Brescia, Italy.

22
23 12 ³ Oncology Unit, Department of Medical and Surgical Specialties, Radiological Sciences, and Public
24
25 13 Health, University of Brescia and ASST Spedali Civili di Brescia, Brescia, Italy.

26
27 14 ⁴ Surgical Clinic, Department of Clinical and Experimental Sciences, University of Brescia at ASST
28
29 15 Spedali Civili di Brescia, Brescia, Italy.

30 16 ⁵ Section of Oncology and Experimental Immunology, Department of Molecular and Translational
31
32 17 Medicine, University of Brescia, Brescia, Italy.

33
34 18 ⁶ Department of Clinical and Biological Sciences University of Turin, Internal Medicine 1, San Luigi
35
36 19 Gonzaga Hospital, Orbassano, Italy.

37
38 20
39
40 21 *Corresponding author:*

41
42 22 Alfredo Berruti, MD

43
44 23 Oncology Unit, Department of Medical and Surgical Specialties, Radiological Sciences, and Public
45
46 24 Health, University of Brescia at ASST Spedali Civili di Brescia

47 25 P.le Spedali Civili 1, 25124 Brescia, Italy

48
49 26 Phone: +39 030 3995410

50
51 27 Fax: +39 0303995072

52
53 28 e-mail: alfredo.berruti@gmail.com

54
55 29
56
57 30 **Conflicts of interest:** Authors have nothing to disclose.

32 **Funding**

1
2
33 This work was supported by: AIRC project IG17678 (PI: M.T.); AIRC project IG14411 (PI: A.B.);
3
4
534 Fondazione Camillo Golgi, Brescia; University of Brescia local grants; private donation of “gli
6
735 Amici di Andrea” in memory of Andrea Gadeschi; private grant from the amateur dramatics group
8
936 “Attori non per caso”, Parish church of Collio Valtrompia (Brescia). M.F. was supported by a grant
10
11
1237 from the Italian Society of Pharmacology.
13
14
1538
16
17
18
19
20
21
22
23
24
25
26
27
28
29
30
31
32
33
34
35
36
37
38
39
40
41
42
43
44
45
46
47
48
49
50
51
52
53
54
55
56
57
58
59
60
61
62
63
64
65

39 **Abstract**

1
240 **Purpose.** The management of patients with adrenocortical carcinoma (ACC) is challenging. As
3
4
41 mitotane and chemotherapy show limited efficacy, there is an urgent need to develop therapeutic
6
742 approaches. The aim of this study was to investigate the antitumor activity of progesterone and
8
9
43 explore the molecular mechanisms underlying its cytotoxic effects in the NCI-H295R cell line and
10
11
1244 primary cell cultures derived from ACC patients.

14
15 **Methods.** Cell viability, cell cycle and apoptosis were analyzed in untreated and progesterone-treated
16
1746 ACC cells. The ability of progesterone to affect the Wnt/ β -catenin pathway in NCI-H295R cells was
18
1947 investigated by immunofluorescence. Progesterone and mitotane combination experiments were also
20
21
2248 performed to evaluate their interaction on NCI-H295R cell viability.

23
249 **Results.** We demonstrated that progesterone exerted a concentration-dependent inhibition of ACC
25
26
50 cell viability. Apoptosis was the main mechanism, as demonstrated by a significant increase of
27
28
2951 apoptosis and cleaved-Caspase-3 levels. Reduction of β -catenin nuclear translocation may contribute
30
31
52 to the progesterone cytotoxic effect. The progesterone antineoplastic activity was synergically
32
33
3453 increased when mitotane was added to the cell culture medium.

35
3654 **Conclusions.** Our results show that progesterone has antineoplastic activity in ACC cells. The
37
38
3955 synergistic cytotoxic activity of progesterone with mitotane provides the rationale for testing this
40
4156 combination in a clinical study.

42
43
44
45
4658 **Abbreviations:** ACC, adrenocortical carcinoma; PgR, progesterone receptor; CI, confidence
47
48
4959 interval; MTT, 3-(4,5-Dimethyl-2-thiazol)-2,5-diphenyl-2H-tetrazolium bromide; mPR,
50
5160 progesterone membrane receptor; PGRMC1, progesterone receptor membrane component 1.

52
53
54
55
5662 **Keywords:** adrenocortical carcinoma, progesterone, progesterone receptor, cell viability.

64 **Introduction**

1
2
3 65 Adrenocortical carcinoma (ACC) is a rare aggressive endocrine tumor [1] that in approximately 50%
4
5 66 of adults is capable of hormone secretion [2]. Cushing's syndrome is the most commonly associated
6
7 67 endocrine disorder [3]. The Systemic therapies have a limited efficacy [4-6]; thus, the prognosis of
8
9 68 advanced ACC patients, not amenable to radical extirpation, is poor with a 5 year survival rate of
10
11
12 69 15% [7]; moreover, histological and molecular diagnostic parameters are not still completely shared
13
14
15 70 [8]. Mitotane (o, p'-dichlorodiphenyldichloroethane, o, p'-DDD) is the reference drug; however,
16
17 71 toxicity and narrow therapeutic index limit its efficacy [9]. Therefore, there is an urgent need of new
18
19 72 therapeutic approaches.

20
21
22 73 We have recently observed that abiraterone acetate (abiraterone) has both antisecretive and antitumor
23
24 74 activities in ACC cell lines [10]. The antisecretive effect of abiraterone is mediated by the inhibition
25
26
27 75 of 17alpha-hydroxylase/17,20-lyase (CYP17A1), a key enzyme for steroid hormone synthesis [11,
28
29 76 12] leading to a rapid inhibition of cortisol secretion [10, 13]. Abiraterone mechanism of action may
30
31 77 involve, at least in part, the Wnt/ β -catenin signaling pathway [10] that is constitutively active in
32
33
34 78 approximately 30% of ACC [14] and is a potential target for new molecular therapies. The cytotoxic
35
36 79 effect of abiraterone remains to be fully elucidated, but evidence strongly indicate that it is directly
37
38
39 80 associated with the drug-induced increase of progesterone levels, requiring the activation of the
40
41 81 intracellular progesterone receptors (PgRs). Interestingly, in addition to the well known role of PgRs
42
43
44 82 as nuclear transcription factors, different members of membrane progesterone receptors (mPRs) have
45
46 83 been identified and the term "extranuclear" or "non-genomic" effects of progesterone was suggested
47
48
49 84 to specifically defined mPR functions [15]. Another putative membrane-specific progesterone
50
51 85 receptor, distinct from known mPRs and nuclear PgR, was isolated from different tissues and called
52
53 86 Progesterone Receptor Membrane Component 1 (PGRMC1) [15, 16]. The extranuclear receptor
54
55
56 87 activation leads to a rapid signaling, linked to various second messenger cascades, including
57
58 88 extracellular signal-regulated kinases (Erk 1/2, p42/44, p38 MAPKs) [15] and regulation of
59
60
61
62
63
64
65

89 intracellular calcium mobilization [16]. These effects are progesterone-dependent but independent of
1
2
3
4
5
6
7
8
9
10
11
12
13
14
15
16
17
18
19
20
21
22
23
24
25
26
27
28
29
30
31
32
33
34
35
36
37
38
39
40
41
42
43
44
45
46
47
48
49
50
51
52
53
54
55
56
57
58
59
60
61
62
63
64
65

intracellular calcium mobilization [16]. These effects are progesterone-dependent but independent of PgR transcriptional activity, and are integral part of progesterone cellular effects [17].

In this study, we investigated the cytotoxic effects of progesterone and the molecular mechanisms underlying its antitumor activity in NCI-H295R ACC cell line [18] and in ACC primary cell cultures derived from patients with either cortisol-secreting or non-secreting ACC.

Materials and Methods

Cell lines

NCI-H295R ACC cell line was obtained from the American Type Culture Collection (ATCC) and cultured as suggested by the manufacturer. Cells were authenticated by the AmpFISTR Identifier PCR amplification kit (Applied Biosystems, Foster City, CA, USA). Media and supplements were supplied by Sigma Italia (Milan, Italy). SW13 cell line was obtained from ATCC and cultured as suggested by the manufacturer.

Primary cell cultures

Human ACC primary cells were derived from three patients with cortisol-secreting tumors (ACC01, ACC02 and ACC16) and from two patients with non-secreting tumors (ACC03, ACC08). Clinical and histological features are reported in Table 1. After surgical removal, cells were enzymatically digested with (0.1 mg/mL) collagenase (Sigma Italia, Milan, Italy) and cultured in the same medium of NCI-H295R cells. The project was approved by the local Ethical Committee and written informed consent was obtained from all patients.

Immunohistochemistry

Immunohistochemistry for PgR was performed on 2 μ m sections from formalin fixed-paraffin embedded ACC tissues. Ventana BenchMark Ultra platform was used according to the manufacturer's recommended settings. Ultra Cell Conditioning 1 (CC1) solution was used for heat-induced epitope retrieval (95°C for 64 min). Slides were incubated (36°C for 16 min) with the ready-to-use anti-PgR antibody (monoclonal rabbit anti-human PR clone 1E2, Roche) [19] and followed by UltraView

115 Universal DAB Detection Kit. Positive and negative controls from breast cancer tissue microarrays
1
116 were included in the same slides.
2
3

4 117 **Cell treatments**

6
118 NCI-H295R cells and ACC primary cultures were seeded in 24-well plates and cultured in complete
8
119 medium. Before treatment, culture medium was switched into charcoal-dextran-treated Nu-Serum
10
120 (cNS)-medium with increasing concentrations of progesterone (0.1 - 160 μ M) and/or mitotane (25
12
121 nM - 40 μ M) for 4 days. Both progesterone and mitotane were dissolved in DMSO. NCI-H295R cells
14
122 were also exposed to mifepristone (0.1 nM – 500 nM) in combination with progesterone (25 μ M) for
16
123 4 days. Mifepristone and mitotane were supplied by Selleckchem Chemicals (DBA Italia, Milan,
18
124 Italy) and progesterone was purchased from Sigma Italia (Milan, Italy). SW13 cells were seeded in
20
21
22 24-well plates and cultured in complete medium. Before treatment, culture medium was switched
24
25
26 into charcoal-dextran-treated FBS-medium with increasing concentrations of progesterone (0.1 - 100
27
28
29 μ M) for 3 days. Cell exposure to DMSO alone did not modify cell viability in any of the cell cultures
30
31
32 used.
33

34 35 **Cell viability assay**

36
37 Cell viability was evaluated by 3-(4,5-Dimethyl-2-thiazol)-2,5-diphenyl-2H-tetrazolium bromide
38
39 (MTT) dye reduction assay according to the manufacturer's protocol (Sigma Italia, Milan, Italy).
40
41
42 Absorbance was measured by a spectrophotometer at 540/620 nm (GDV, Rome, Italy).
43

44 45 **Drug combination experiments**

46
47 Progesterone and mitotane combination experiments were performed to evaluate their interaction on
48
49 NCI-H295R cell viability, according to the Chou and Talalay method [20]. Cells were treated for 4
50
51 days with progesterone (0.1 - 160 μ M) and mitotane alone (25 nM - 40 μ M) or with progesterone in
52
53 combination with mitotane at a fixed ratio (progesterone : mitotane = 4:1), as recommended for the
54
55 most efficient data analysis [21, 22]. Cells were analyzed for cell viability using MTT. Data were
56
57 then converted to Fraction affected (Fa, range from 0 to 1 where Fa = 0 indicating 100% of cell
58
59 viability and Fa = 1 indicating 0% of cell viability) and analyzed using the CompuSyn software
60
61
62
63
64
65

141 (ComboSyn inc. Paramus, NJ, USA) to calculate the Combination Index (CI), being the CI value <
1
142 0.9 an indication of synergism, a CI = 0.9-1.1 an indication of additive effect and CI > 1.1 and
3
143 indication of antagonism.
4
5
6

144 **Quantitative RT-PCR (qRT-PCR)**

8

145 Gene expression was evaluated by qRT-PCR (ViiA7 Real-Time PCR System, ThermoFisher
10
146 Scientific, Milan, Italy), using SYBR Green as fluorochrome, as described elsewhere [23]. The
11
147 sequences of sense and antisense oligonucleotide primers are listed in Supplemental Table 1.
12
148 Differences in the threshold cycle Ct values between the beta-actin housekeeping gene and the
13
149 studied genes (Δ Ct) were then calculated as an indicator of the amount of mRNA expressed.
14
15
16
17
18
19
20

21 **Western Blot**

22

23
24
25 Whole cell lysates were prepared in ice-cold buffer with protease and phosphatase inhibitor cocktails
26
27 (Roche, Milan, Italy) [24]. Equal amounts of protein were separated by electrophoresis on a 4-12%
28
29 NuPAGE Bis-Tris Gel System (Life Technologies, Milan, Italy) and electroblotted to a nitrocellulose
30
31 membrane. Rabbit monoclonal antibody against human Caspase-3 (Cell Signaling Technology,
32
33 Milan, Italy) [25] were used, both at final concentration 0.1 μ g/mL. The Erk protein was detected
34
35 using anti-total Erk and anti-phospho-Erk antibodies (Santa Cruz Biotechnologies, Heidelberg,
36
37 Germany) [26] at final concentration 0.7 μ g/mL. Primary antibodies anti-mPR (0.5 μ g/mL final
38
39 concentration) and anti-PRGMC1 (1 μ g/mL final concentration) were purchased from Abcam
40
41 (Cambridge, UK) [27] and Santa Cruz Biotechnologies (Heidelberg, Germany) [28]. A mouse
42
43 monoclonal antibody directed against the N-terminal region of human α -Tubulin (Sigma Italia, Milan,
44
45 Italy) was used to normalize the values. Secondary HRP-labelled anti-rabbit and anti-mouse
46
47 antibodies (Santa Cruz Biotechnologies, Heidelberg, Germany) were used and the specific signal was
48
49 visualized by the ECL-LiteAblot Extend Long (Euroclone, Milan, Italy). Densitometric analysis of
50
51 the immunoblots was performed using the GelPro-Analyzer v 6.0 (MediaCybernetics, Bethesda, MD,
52
53 USA).
54
55
56
57
58
59

60 **Double staining AO/EtBr**

61

167 NCI-H295R cells were treated with progesterone (25 μ M) for 4 days. A double staining with acridine
1
168 orange (AO) and ethidium bromide (EtBr) was performed to visualize and quantify the number of
2
3
4
169 viable, apoptotic and necrotic cells, as previously described [10]. Cells were examined by a Zeiss
5
6
170 LSM 510 META confocal laser-scanning microscope (Carl Zeiss AG, Germany). Several fields,
7
8
9
171 randomly chosen, were digitalized and scored by using the NIH Image J software.
10
11

172 **Cell cycle analyses**

173 Flow cytometric cell cycle analysis was performed as described, with minor modifications [29].
14
15
16
174 Briefly, untreated and progesterone-treated NCI-H295R cells were fixed, treated with RNase A (12.5
17
18
19
20
21
22
23
24
25
26
27
28
29
30
31
32
33
34
35
36
37
38
39
40
41
42
43
44
45
46
47
48
49
50
51
52
53
54
55
56
57
58
59
60
61
62
63
64
65

478 **Immunofluorescence**

479 Cells were grown onto 12 mm poly-L-lysine coated coverslips and treated with IC₅₀ value of
30
31
32
33
34
35
36
37
38
39
40
41
42
43
44
45
46
47
48
49
50
51
52
53
54
55
56
57
58
59
60
61
62
63
64
65

578 **Statistical Analysis**

191 Statistical analysis was carried out using GraphPad Prism software (version 5.02, GraphPad Software,
1 La Jolla, CA, USA). One-way ANOVA with Bonferroni's correction was used for multiple
192 comparisons. Unless otherwise specified, data are expressed as mean \pm S.E.M. of at least three
193 experiments run in triplicate. *P* values < 0.05 were considered statistically significant.
194

195

196

197

198

199

200

201

202

203

204

205

206

207

208

209

210

211

212

213

214

215

216

217

218

219

220

221

222

223

224

225

226

227

228

229

230

231

232

233

234

235

236

237

238

239

240

Results

Progesterone effects on NCI-H295R cell viability

The predominant expression of the intracellular full length PgR B isoforms was previously described in NCI-H295R cells [10]. The exposure of NCI-H295R cells to increasing concentrations of progesterone (0.1 - 160 μ M) for 4 days led to a reduction in NCI-H295R cell viability in a concentration-dependent manner (Fig. 1a). Sigmoidal concentration-response function was applied to calculate the IC₅₀ value of progesterone in NCI-H295R cells, which was 25.5 μ M (95% confidence interval [CI], 19.9 to 32.9). Time course experiments in NCI-H295R cells treated with progesterone at the IC₅₀ value demonstrated that the reduction of cell viability reached its maximum at 4 days, with no significant change up to 6 days (IC₅₀ value of 29.6 μ M; 95% CI 23.6 to 37.0) (data not shown). Pretreatment of NCI-H295R cells with increasing concentration of the PgR antagonist mifepristone (0.1 -500 nM) antagonized the cytotoxic effect elicited by progesterone at its IC₅₀ for 4 days (Fig. 1b). This provides evidence that the antineoplastic activity of progesterone requires the stimulation of the PgRs. Mifepristone alone (0.1 – 500 nM; 4 days) did not affect NCI-H295R cells viability (data not shown).

Progesterone induces NCI-H295R cells apoptosis, without inducing changes in the cell cycle distribution

To provide explanation on the mechanism underlying the progesterone-induced NCI-H295R cell toxicity, cells were treated with progesterone (25 μ M; 4 days) and stained with AO/EtBr. Progesterone deeply increased the number of apoptotic cells $39 \pm 2\%$; while necrotic and living cells were $2 \pm 2\%$ and $59 \pm 3\%$ respectively (apoptotic cells: untreated vs treated cells: *P* < 0.001 Fig. 2a).

217 Time-course experiments were conducted and our results demonstrated that after 2 days of treatment,
1
218 the effect is as follow: $93 \pm 1\%$ living cells, $7 \pm 1\%$ apoptotic cells and no necrotic cells (apoptotic
3
219 cells: untreated vs treated cells: $P < 0.05$; Supplemental Fig.1a). Progesterone-induced apoptotic
4
6
220 cytotoxicity reached its maximum after 4 days of treatment, as above indicated, and it was not
8
221 modified if cells were exposed to progesterone up to 6 days: $47 \pm 1\%$ living cells, $43 \pm 3\%$ apoptotic
10
11
222 cells, $10 \pm 1\%$ necrotic cells (apoptotic cells: untreated vs treated cells: $P < 0.001$; Supplemental
13
14
223 Fig.1b). We next examined the expression of total Caspase-3 and the cleaved-Caspase-3, that play a
15
16
224 central role in the execution phase of cell apoptosis [30], in progesterone-treated NCI-H295R cells in
18
19
225 comparison to untreated cells (Fig.2b). Progesterone exposure for 48 hrs significantly increased the
20
21
226 expression of cleaved-Caspase-3 (% of increase: 23.9 ± 1.6) while total Caspase-3 levels were not
23
24
227 affected. The analyses of the cell cycle progression by flow cytometry in untreated and progesterone-
25
26
228 treated NCI-H295R cells did not show significant differences in cell distribution up to 4 days of
27
28
229 treatment (Fig.2c). However, we observed that treatment with progesterone for 4 days increased the
30
31
230 proportion of cells in the sub-G0 phase: $29.7 \pm 4.6\%$ untreated cells, $50.3 \pm 5.1\%$ progesterone-treated
32
33
231 cells ($P < 0.05$), suggestive of DNA fragmentation. Taken together these observations suggest that
35
36
232 apoptosis is the main mechanism mediating the progesterone cytotoxicity.
37

233 **Effect of progesterone on β -catenin nuclear translocation in NCI-H295R cells**

234 NCI-H295R cells were treated with progesterone and analyzed for β -catenin localization using
42
43
235 immunofluorescence analyses. At baseline, β -catenin was highly expressed in the nucleus (Fig.3a),
45
46
236 whereas the cell exposure to progesterone at its IC_{50} reduced β -catenin nuclear localization and
47
48
237 increased its retention into cytoplasm (Fig.3b). The effect of progesterone in sequestering β -catenin
50
51
238 in cytoplasm was counteracted by 100 nM mifepristone (Fig.3c). Immunofluorescence quantification
52
53
239 using ImageJ software, reported in Table 2, demonstrated that progesterone significantly reduced β -
55
56
240 catenin nuclear localization. The progesterone-induced reduction of nuclear β -catenin induced the
57
58
241 decrease of mRNA expression of some of its target genes, namely MYC and survivin, while the
60
61
62
63
64
65

242 mRNA expression level of another gene, CCND1, resulted unchanged by progesterone treatment
1
243 (Supplemental Fig.2).

244 **mPR and PGRMC1**

245 As underlined in the Introduction, accumulating evidence suggests that rapid progesterone responses
246 are mediated by activation of mPRs [31]. In order to evaluate whether or these receptors could
247 contribute to the observed progesterone cytotoxic effect on NCI-H295R, we firstly evaluated their
248 expression. As shown in Supplemental Fig.3a, NCI-H295R expressed mPRs. These receptors were
249 functionally active, as, when cells were treated with the IC₅₀ value of progesterone, we observed a
250 reduction of phospho-Erk protein level (% of decrease: 30.39 ± 1.14) at very early time, namely 15'
251 after progesterone exposure (Supplemental Fig.3b). Finally, we demonstrated that NCI-H295R
252 expressed as well the PGRMC1 (Supplemental Fig.3a).

253 **Progesterone enhanced NCI-H295R cytotoxicity induced by mitotane in drug-combination** 254 **treatments**

255 To evaluate whether progesterone treatment of NCI-H295R cells could enhance the cytotoxicity of
256 mitotane, the combination index (CI) was calculated according to the Chou-Talalay method [21].
257 NCI-H295R cells were firstly exposed to increasing concentrations of mitotane (25 nM - 40 μM) for
258 4 days and analyzed for cell viability by MTT assay. Sigmoidal concentration-response function was
259 used to calculate the IC₅₀ value, which was 3 μM (95% CI, 2.08 to 4.34) (Fig.4a). The cytotoxic effect
260 of progesterone in combination with mitotane was evaluated at the 1:4 fixed molar ratio for 4 days
261 (Fig.4b). We found that in NCI-H295R cells, the combination had a synergistic cytotoxic effect as
262 compared to each single compound at a Fa = 0.09 - 0.86 with range of CI: 0.08 to 0.88 (Fig.4c).

263 **Progesterone exerted cytotoxic effect in primary human ACC cells**

264 Primary cultures derived from ACC patients were treated with increasing concentrations of
265 progesterone for 4 days and analyzed for cell viability by MTT assay. In cortisol-secreting ACC cells
266 (ACC01, ACC02 and ACC16), progesterone exerted a concentration-dependent inhibition of cell
267 viability with IC₅₀ values of 18 μM (95% CI 11.4 to 31.7), 32.9 μM (95% CI 26.5 to 40.9) and 39.2

268 μM (95% CI 31.8 to 48.4) respectively. Immunohistochemical analyses of PgR expression in ACC01,
1
269 ACC02 and ACC16 tumors showed that at least 40% of neoplastic cells were positive for PgR (Table
3
270 1). By contrast, a lesser cytotoxic effect of progesterone was observed in the non-secreting human
6
271 ACC cells, ACC03 and ACC08, with IC_{50} values of 73.4 μM (95% CI 46.1 to 116.8) and 80.8 μM
8
272 (95% CI 50.5 to 129.5) respectively (Fig.5). PgR expression in these cells was detected in less than
10
273 5% of ACC cells (Table 1).

274 **Progesterone effect on SW13 cell line.**

275 Finally, as an internal control, we tested the effect of progesterone in the non steroidogenic SW13
18
276 cell line, that belongs from a small cell carcinoma of adrenal and which exact histopathological
20
277 features are still under investigation [32]. We firstly analyzed the mRNA expression of PgRs and
23
278 results indicated that SW13 cells were devoid of PgR: indeed, q-RT-PCR analysis revealed a not
25
279 detectable PgR mRNA expression in this cell line compared to the ΔCt of 9.01 ± 0.25 in NCI-H295R
28
280 cells, used as positive control. The western blot analysis of mPR and PGRMC1 expression in SW13
30
281 cell line indicated that these receptor proteins were expressed in this cell line (Supplemental Figure
32
33
282 4a). When exposed to increasing concentrations of progesterone within the same range of
35
283 concentrations used for NCI-H295R cells, a cytotoxic effect could be observed, although it was non
37
284 concentration-dependent (Supplemental Fig.4b).

286 **Discussion**

287 In the present study, we demonstrated that progesterone, through its receptors, exerted a
47
288 concentration-dependent and time-dependent inhibition of ACC cell viability, and this effect was, at
49
50
289 least in part, counteracted by the PgR antagonist mifepristone. The role of PgR is further supported
52
290 by data published by our group, where the PgR silencing induces the almost complete disappearance
54
291 of the effect of abiraterone on cell viability [10]. The cytotoxic effect of progesterone was observed
57
292 in the NCI-H295R cells, an ACC cell line that mainly express the full length PgR B isoform [10, 33]
59
293 and confirmed in primary cell cultures derived from cortisol-secreting ACC that are characterized by

294 a marked expression of the PgR. Indeed, the cytotoxic effect of progesterone was less evident in non-
1
295 secreting ACC tumors in which PgR expression was low. Intriguingly, we demonstrated that NCI-
3
4
296 H295R cells expressed also the mPR and PGRMC1 component, suggesting that the progesterone
5
6
297 effects that we observed in ACC cells, both in cell line and primary cultures, could be a result of a
8
9
298 multifactorial process involving both genomic and non-genomic actions, dependent on both
10
11
299 membrane and intracellular progesterone receptor arrangement expressed by each ACC tumor. The
13
14
300 scenario is even more complex than expected, in light of the evidence showing that the different effect
15
16
301 of progesterone depends on many variables, such as the type of cells, the genomic and/or non genomic
18
19
302 effects linked to the progesterone receptor expression and the concentration of hormone present [34].
20
21
303 As a matter of fact , we observed that the non steroidogenic SW13 cell line, established from a small
23
24
304 cell carcinoma of the adrenal [35], was responsive to the cytotoxic effect of progesterone (although
25
26
305 without displaying a concentration-dependent curve) despite they expressed only mPR and
27
28
306 PGRMC1. On the basis of these preliminary results the characterization of expression and function
30
31
307 of all receptor components of progesterone pathway in our experimental models is now undergoing
32
33
308 in our lab.
35
36
309 The present results confirm and extend our previous study [10] showing that the *in vitro*
37
38
310 antineoplastic activity of abiraterone is mediated by the drug-induced increase in progesterone levels.
40
41
311 PgRs, therefore, could represent a novel promising target in the management of ACC.
42
43
312 In PgR-positive breast cancer cell lines, progestins can induce a growth arrest due to decreased
45
46
313 expression and activity of cyclin-dependent kinase (cdk) complexes [36]. In the present study, we
47
48
314 showed that the progesterone-induced cytotoxicity of NCI-H295R ACC cells was not cell cycle
49
50
315 mediated, but apoptosis represented the main molecular events, with a significant increase of the
52
53
316 proapoptotic cleaved-Caspase-3 levels in the initial phase of the treatment. The ability of progesterone
54
55
317 in modulating apoptotic events, both *in vitro* and *in vivo*, was previously demonstrated in several
57
58
318 tumor cells [37-41]. On the light of these results, we therefore explored the possible molecular
59
60
319 mechanism regulating the progesterone-induced apoptosis in ACC.
62
63
64
65

320 The Wnt/ β -catenin pathway is frequently altered in ACC, which is characterized by CTNNB1
1
321 mutations leading to β -catenin accumulation in the nucleus, where it binds with the T cell factor (Tcf)
3
322 and enhances its transcriptional activity. In the NCI-H295R cell line, harboring the activating
4
323 CTNNB1 p.S45P mutation, we found that progesterone treatment partially inhibited the β -catenin
5
324 translocation into the nucleus, thus suggesting the involvement of this pathway in the progesterone
6
325 antineoplastic activity. These data are in line with our previous *in vitro* experiments showing that the
7
326 increased levels of progesterone in NCI-H295R cell culture microenvironment, induced by the block
8
327 of the CYP17A1 by abiraterone, significantly inhibited the β -catenin migration into the nucleus.
9
328 Further evidence comes from studies showing that progesterone is able to inhibit the Wnt/ β -catenin
10
329 pathway in endometrial carcinoma [42]. The functional effect of the β -catenin modification of
11
330 traslocation is the down-regulation of the expression of some β -catenin target genes, namely MYC
12
331 and survivin, while CCND1 was not modified.
13
332 Taken together these data are suggestive for an involvement of β -catenin inhibition in the
14
333 progesterone induced apoptosis of ACC cells. These data, however, are not exhaustive and the full
15
334 evidence of the inhibitory effect would require the demonstration of a modulation of the expression
16
335 of other specific β -catenin target genes in NCI-H295R cells by progesterone treatment. These further
17
336 experiments are outside the scope of the present paper and will be a matter of a future study.
18
337 Finally, the *in vitro* demonstration of the synergistic cytotoxic effect of the combination mitotane +
19
338 progesterone could be of considerable interest for its possible clinical application, as progesterone
20
339 and its derivatives are already part of the supportive approach in cancer patients . These preclinical
21
340 data provides the rationale for a new trial testing the efficacy of progesterone n association with
22
341 current systemic therapies in the management of ACC patients.
23
342 In conclusion, the present study shows that progesterone exerts a cytotoxic activity in ACC cells, by
24
343 inducing apoptosis via activation of the progesterone receptors. Both the genomic and non-genomic
25
344 effects of progesterone seemed to mediate the cytotoxicity, although this point is still under
26
27
28
29
30
31
32
33
34
35
36
37
38
39
40
41
42
43
44
45
46
47
48
49
50
51
52
53
54
55
56
57
58
59
60
61
62
63
64
65

345 investigation. The synergistic cytotoxic activity of progesterone with mitotane provides the rationale
1
346 for testing this combination in a prospective clinical study.
3
4

347
5

6

348 **References**

8

349 1. C.L. Ronchi, M. Kroiss, S. Sbierra, T. Deutschbein, M. Fassnacht: EJE prize 2014: current and
10
11 evolving treatment options in adrenocortical carcinoma: where do we stand and where do we want to
12
13 go? *Eur. J. Endocrinol.* **171**, R1-R11 (2014)
14
15

16
17 2. M. Terzolo, F. Daffara, A. Ardito, B. Zaggia, V. Basile, L. Ferrari, A. Berruti: Management of
18
19 adrenal cancer: a 2013 update. *J. Endocrinol. Invest.* **37**, 207-17 (2014)
20

21
22 3. A. Berruti, E. Baudin, H. Gelderblom, H.R. Haak, F. Porpiglia, M. Fassnacht, G. Pentheroudakis:
23
24 ESMO Guidelines Working Group. Adrenal cancer: ESMO Clinical Practice Guidelines for
25
26 diagnosis, treatment and follow-up. *Ann. Oncol.* **23 Suppl 7**, 131-138 (2012)
27

28
29 4. M. Fassnacht, M. Terzolo, B. Allolio, E. Baudin, H. Haak, A. Berruti, S. Welin, C. Schade-
30
31 Brittinger, A. Lacroix, B. Jarzab, H. Sorbye, D.J Torpy, V. Stepan et al: Combination chemotherapy
32
33 in advanced adrenocortical carcinoma. *N. Engl. J Med.* **366**, 2189-2197 (2012)
34
35

36
37 5. A. Berruti, M. Terzolo, P. Sperone, A. Pia, S. Della Casa, D.J. Gross, C. Carnaghi, P. Casali, F.
38
39 Porpiglia, F. Mantero, G. Reimondo, A. Angeli, L. Dogliotti: Etoposide, doxorubicin and cisplatin
40
41 plus mitotane in the treatment of advanced adrenocortical carcinoma: a large prospective phase II
42
43 trial. *Endocr. Relat. Cancer.* **12**, 657-666 (2005)
44

45
46 6. A. Berruti, M. Fassnacht, H. Haak, T. Else, E. Baudin, P. Sperone, M. Kroiss T. Kerkhofs, A.R.
47
48 Williams, A. Ardito, S. Leboulleux, M. Volante, T. Deutschbein, R. Feelders, C. Ronchi, S. Grisanti,
49
50 H. Gelderblom, F. Porpiglia, M. Papotti, G.D. Hammer, B. Allolio, M. Terzolo: Prognostic role of
51
52 overt hypercortisolism in completely operated patients with adrenocortical cancer. *Eur. Urol.* **65**,
53
54 832-838 (2014)
55
56

57
58 7. R. Libé, I. Borget, C.L. Ronchi, B. Zaggia, M. Kroiss, T. Kerkhofs, J. Bertherat, M. Volante, M.
59
60 Quinkler, O. Chabre, M. Bala , A. Tabarin, F. Beuschlein et al.: Prognostic factors in stage III-IV
61
62

- 371 adrenocortical carcinomas (ACC): an European Network for the Study of Adrenal Tumor (ENSAT)
1
372 study. *Ann. Oncol.* **26**, 2119-2125 (2015)
3
4
373 8. M. Volante, C. Buttiglierio, E. Greco, A. Berruti, M. Papotti: Pathological and molecular features
6
374 of adrenocortical carcinoma: an update. *J Clin Pathol.* **61**, 787-793 (2008)
8
9
375 9. Puglisi S, Perotti P, Cosentini D, Roca E, Basile V, Berruti A, Terzolo M. Decision-making for
10
376 adrenocortical carcinoma: surgical, systemic, and endocrine management options. *Expert Rev*
13
377 *Anticancer Ther.* 2018 Aug 21:1-9.
14
15
378 10. C. Fiorentini, M. Fragni, P. Perego, S. Vezzoli, S.A. Bonini, M. Tortoreto, D. Galli, M. Claps,
18
379 G.A. Tiberio, M. Terzolo, C. Missale, M. Memo, G. Procopio, N. Zaffaroni, A. Berruti, S. Sigala:
20
380 Antisecretive and Antitumor Activity of Abiraterone Acetate in Human Adrenocortical Cancer: A
21
381 Preclinical Study. *J. Clin. Endocrinol. Metab.* **101**, 4594-4602 (2016)
22
23
382 11. G. Attard, A.H. Reid, R.J Auchus, B.A. Hughes, A.M. Cassidy E. Thompson, N.B. Oommen, E.
26
383 Folkerd, M. Dowsett W. Arlt, J.S. de Bono: Clinical and biochemical consequences of CYP17A1
27
384 inhibition with abiraterone given with and without exogenous glucocorticoids in castrate men with
30
385 advanced prostate cancer. *J. Clin. Endocrinol. Metab.* **97**, 507-516 (2012)
31
32
386 12. A. Pia, F. Vignani, G. Attard, M. Tucci, P. Bironzo, G. Scagliotti, W. Arlt, M. Terzolo, A.
33
387 Berruti: Strategies for managing ACTH dependent mineralocorticoid excess induced by abiraterone.
34
388 *Cancer. Treat. Rev.* **39**, 966-973 (2013)
35
36
389 13. M. Claps, B. Lazzari, S. Grisanti, V. Ferrari M. Terzolo, S. Sigala, S. Vezzoli, M. Memo, M.
37
390 Castellano, A. Berruti: Management of severe Cushing's syndrome induced by adrenocortical
38
391 carcinoma with abiraterone acetate: a case report. *AAE Clinical Reports.* **2**, 337-341 (2016)
39
40
41
392 14. A. Salomon, M. Keramidas, C. Maisin, M. Thomas: Loss of β -catenin in adrenocortical cancer
42
393 cells causes growth inhibition and reversal of epithelial-to-mesenchymal transition. *Oncotarget* **6**,
43
394 11421-11433 (2015)
44
45
395 15. D. Garg, S.S.M Ng K.M. Baig, P. Driggers, J. Segars: Progesterone-Mediated Non-Classical
46
396 Signaling. *Trends Endocrinol. Metab.* **28**, 656-668 (2017)
47
48
49
50
51
52
53
54
55
56
57
58
59
60
61
62
63
64
65

- 397 16. R.L. Ashley, C.M. Clay, T.A. Farmerie, G.D. Niswender, T.M. Nett: Cloning and characterization
1
398 of an ovine intracellular seven transmembrane receptor for progesterone that mediates calcium
3
400 mobilization. *Endocrinology*. **147**, 4151-4159 (2006)
4
399
6
400 17. V. Boonyaratanakornkit, N. Hamilton, D.C. Márquez-Garbán, P. Pateetin, E.M. McGowan, R.J.
8
401 Pietras: Extranuclear signaling by sex steroid receptors and clinical implications in breast cancer.
10
402 *Mol. Cell. Endocrinol.* **466**, 51-72 (2018)
11
13
403 18. W.E. Rainey, K. Saner, B.P. Schimmer: Adrenocortical cell lines. *Mol. Cell. Endocrinol.* **228**, 23-
14
15
404 38 (2004)
16
18
405 19. E.N. Kornaga A.C. Klimowicz, N. Guggisberg, T. Ogilvie, D.G. Morris, M. Webster, A.M.
20
406 Magliocco: A systematic comparison of three commercial estrogen receptor assays in a single clinical
21
23
407 outcome breast cancer cohort. *Mod. Pathol.* **29**, 799-809 (2016)
25
26
408 20. T.C. Chou, P. Talalay: Quantitative analysis of dose-effect relationships: the combined effects of
27
28
409 multiple drugs or enzyme inhibitors. *Adv. Enzyme. Regul.* **22**, 27-55 (1984)
30
31
410 21. T.C. Chou: Theoretical basis, experimental design, and computerized simulation of synergism
32
33
411 and antagonism in drug combination studies. *Pharmacol. Rev.* **58**, 621-681 (2006)
35
36
412 22. J. Hofman, D. Ahmadimoghaddam, L. Hahnova, P. Pavek, M. Ceckova, F. Staud: Olomoucine II
37
38
413 and purvalanol A inhibit ABCG2 transporter in vitro and in situ and synergistically potentiate
40
414 cytostatic effect of mitoxantrone. *Pharmacol. Res.* **65**, 312-319 (2012)
42
43
415 23. S. Sigala, S. Bodei, C. Missale, D. Zani, C. Simeone, S.C. Cunico, P.F. Spano: Gene expression
44
45
416 profile of prostate cancer cell lines: effect of nerve growth factor treatment. *Mol. Cell. Endocrinol.*
47
48
417 **284**, 11-20 (2008)
49
50
418 24. C. Fiorentini, S. Bodei, F. Bedussi, M. Fragni, S.A. Bonini, C. Simeone, D. Zani, A. Berruti, C.
52
53
419 Missale, M. Memo, P.F. Spano, S. Sigala: GPNMB/OA protein increases the invasiveness of human
54
55
420 metastatic prostate cancer cell lines DU145 and PC3 through MMP-2 and MMP-9 activity. *Exp. Cell.*
57
58
421 *Res.* **323**, 100-111 (2014)
59
60
61
62
63
64
65

- 422 25. V. Porrini I. Sarnico, M. Benarese, C. Branca, M. Mota, A. Lanzillotta, A. Bellucci, E. Parrella,
1
423 L. Faggi, P.F. Spano, B.P. Imbimbo, M. Pizzi: Neuroprotective and Anti-Apoptotic Effects of CSP-
3
424 1103 in Primary Cortical Neurons Exposed to Oxygen and Glucose Deprivation. *Int. J. Mol. Sci.* 18
6
425 (2017)
8
426 26. M. Babagana, S. Johnson, H. Slabodkin, W. Bshara, C. Morrison, E.S. Kandel: P21-activated
10
427 kinase 1 regulates resistance to BRAF inhibition in human cancer cells. *Mol. Carcinog.* **56**, 1515-
13
428 1525 (2017)
15
429 27. N.M. Bashour S. Wray: Progesterone Directly and Rapidly Inhibits GnRH Neuronal Activity via
18
430 Progesterone Receptor Membrane Component 1 *Endocrinology.* **153**, 4457–4469
20
431 (2012)
23
432 28. V. Lodde, J.J. Peluso: A novel role for progesterone and progesterone receptor membrane
25
433 component 1 in regulating spindle microtubule stability during rat and human ovarian cell mitosis.
27
434 *Biol. Reprod.* **84**, 715-722 (2011)
30
435 29. A. Chimento A, Sirianni R, Casaburi I, Zolea F, Rizza P, Avena P, Malivindi R, De Luca A,
32
436 Campana C, Martire E, Domanico F, Fallo F, Carpinelli G, Cerquetti L, Amendola D, Stigliano A,
35
437 Pezzi V. GPER agonist G-1 decreases adrenocortical carcinoma (ACC) cell growth in vitro and in
37
438 vivo. *Oncotarget.* **6**, 19190-19203 (2015)
40
439 30. R.S.Y. Wong: Apoptosis in cancer: from pathogenesis to treatment. *J. Exp. Clin. Cancer. Res.* 30-
42
440 87 (2011)
44
441 31. A.O. Mueck, X. Ruan, H. Seeger, T. Fehm, H. Neubauer: Genomic and non-genomic actions of
47
442 progestogens in the breast. *J. Steroid. Biochem. Mol. Biol.* **142**, 62-67 (2014)
49
443 32. T. Wang, W.E. Rainey: Human adrenocortical carcinoma cell lines. *Mol Cell Endocrinol.* **351**,
52
444 58-65 (2012)
54
445 33. K.M. Scarpin, J.D. Graham, P.A. Mote, C.L. Clarke: Progesterone action in human tissues:
57
446 regulation by progesterone receptor (PR) isoform expression, nuclear positioning and coregulator
59
447 expression. *Nucl. Recept. Signal.* 7: e009 (2009)
61
62
63
64
65

- 448 34. J.H. Check: The role of progesterone and the progesterone receptor in cancer. *Expert Rev*
1
449 *Endocrinol Metab.* **12**, 187-197 (2017)
3
- 450 35. A. Leibovitz, W.M. 3rd McCombs, D. Johnston, C.E. McCoy, J.C. Stinson: New human cancer
4
5
6
451 cell culture lines. I. SW-13, small-cell carcinoma of the adrenal cortex. *J. Natl. Cancer Inst.* **51**, 691-
8
9
452 697 (1973)
10
- 453 36. V. Boonyaratanakornkit, E. McGowan L. Sherman, M.A. Mancini, B.J. Cheskis, D.P. Edwards:
11
12
13
454 The role of extranuclear signaling actions of progesterone receptor in
14
15
16
455 mediating progesterone regulation of gene expression and the cell cycle. *Mol. Endocrinol.* **21**, 359-
18
19
456 375 (2007)
20
- 457 37. S.Z. Bu, D.L. Yin, X.H. Ren, L.Z. Jiang, Z.J. Wu, Q.R. Gao, G. Pei: Progesterone induces
21
22
23
458 apoptosis and up-regulation of p53 expression in human ovarian carcinoma cell lines. *Cancer.* **79**,
25
26
459 1944-1950 (1997)
27
- 460 38. V. Syed, S.M. Ho: Progesterone-induced apoptosis in immortalized normal and malignant human
28
29
30
461 ovarian surface epithelial cells involves enhanced expression of FasL. *Oncogene.* **22**, 6883-6890
31
32
33
462 (2003)
35
- 463 39. B. Formby, T.S. Wiley: Bcl-2, survivin and variant CD44 v7-v10 are downregulated and p53 is
36
37
38
464 upregulated in breast cancer cells by progesterone: inhibition of cell growth and induction of
39
40
41
465 apoptosis. *Mol. Cell. Biochem.* **202**, 53-61 (1999)
42
- 466 40. K. Horita, N. Inase, S. Miyake, B. Formby, H. Toyoda, Y. Yoshizawa: Progesterone induces
43
44
45
467 apoptosis in malignant mesothelioma cells. *Anticancer Res.* **21**, 3871-3874 (2001)
47
- 468 41. F. Atif, S. Yousuf, D.G. Stein: Anti-tumor effects of progesterone in human glioblastoma
48
49
50
469 multiforme: role of PI3K/Akt/mTOR signaling. *J. Steroid. Biochem. Mol. Biol.* **146**, 62-73 (2015)
52
- 470 42. Y. Wang, P. Hanifi-Moghaddam, E.E. Hanekamp, H.J. Kloosterboer, P. Franken, J. Veldscholte,
53
54
55
471 H.C. van Doorn, P.C. Ewing, J.J. Kim, J.A. Grootegoed, C.W. Burger, R. Fodde, L.J. Blok:
56
57
472 Progesterone inhibition of Wnt/beta-catenin signaling in normal endometrium and endometrial
58
59
473 cancer. *Clin. Cancer. Res.* **15**, 5784-5793 (2009)
60
61
62
63
64
65

474 43. P. De Cremoux, D. Rosenberg, J. Goussard, C. Brémont-Weil, F. Tissier, C. Tran-Perennou L.
1
475 Groussin, X. Bertagna, J. Bertherat, M.L. Raffin-Sanson : Expression of progesterone and estradiol
3
476 receptors in normal adrenal cortex, adrenocortical tumors, and primary pigmented nodular
4
6
477 adrenocortical disease. *Endocr. Relat. Cancer*. **15**, 465–674 (2008)
8
9

478
10

479 **Figure Legends**

480
481 **Fig. 1: Cytotoxic effect of progesterone in NCI-H295R cells.** a. NCI-H295R cells were treated with
14
15
16 increasing concentration of progesterone (0.1-160 μM) for 4 days. Cell viability was analyzed by
17
18
19 MTT assay. Results are expressed as percent of viable cells vs control (ctrl) cells. Data are the mean
20
21
22 \pm S.E.M. of three experiments performed in triplicate. $**P < 0.001$ vs ctrl. b. Cells were treated with
23
24 progesterone (25 μM) for 4 day in the presence of the PgR antagonist mifepristone (0.1 nM – 500
25
26 nM). Cell viability was analyzed by MTT assay. Results are expressed as percent of viable cells vs
27
28 control (ctrl) cells. Data are the mean \pm S.E.M. of three experiments performed in triplicate. $**P <$
29
30
31 0.001 vs ctrl.
32

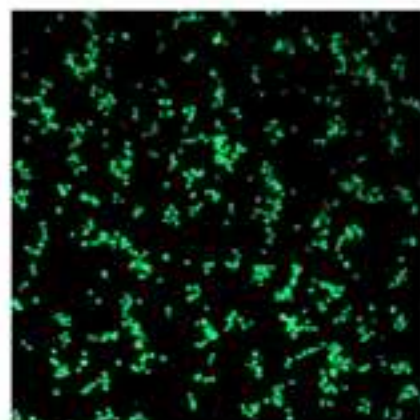
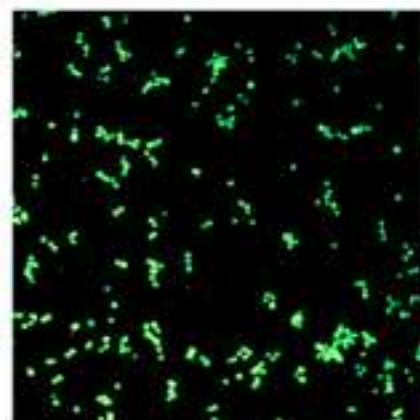
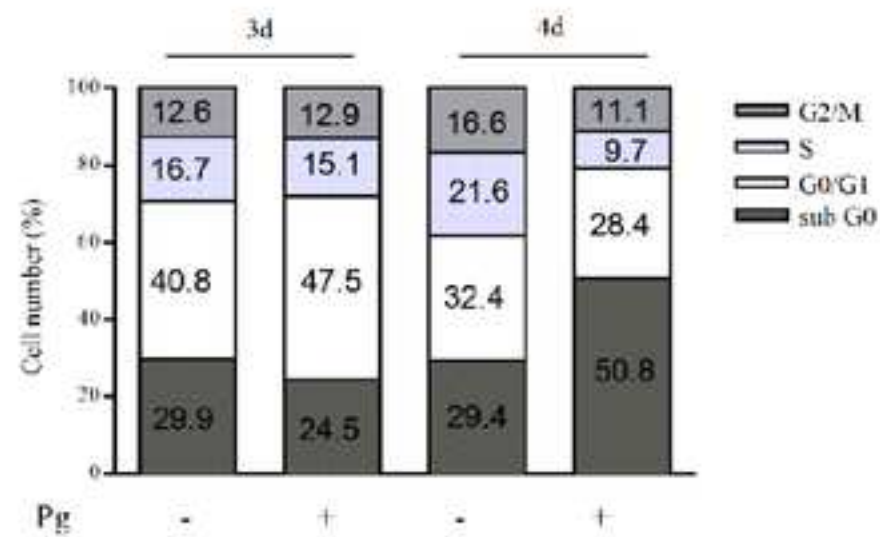
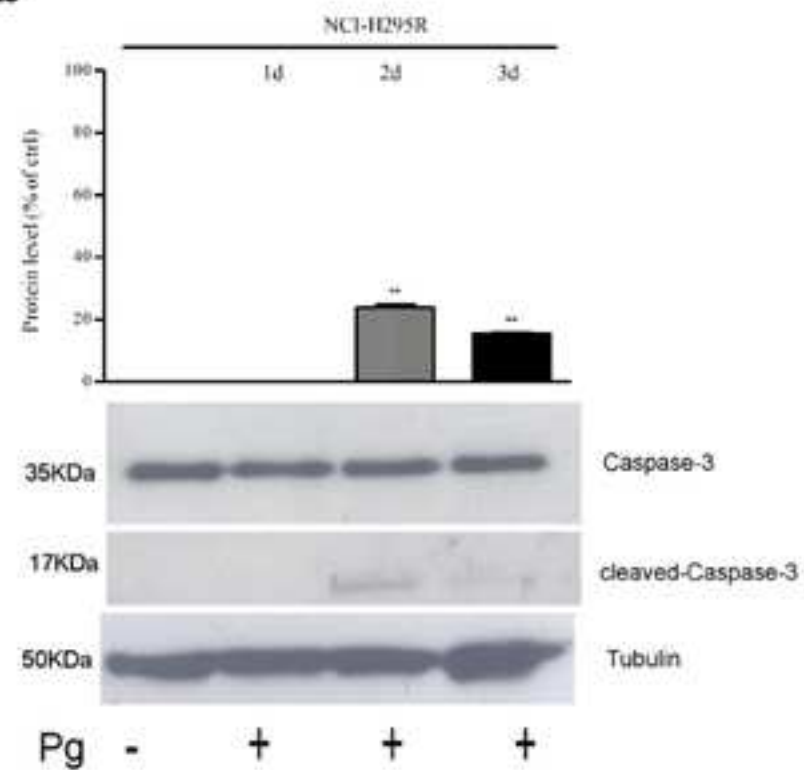
33
34 **Fig. 2: Progesterone promotes apoptotic events in NCI-H295R cells, with no influences on cell**
35
36 **cycle phases.** a. NCI-H295R cells were treated with progesterone (25 μM) for 4 days. Untreated (C)
37
38 and progesterone-treated (T) cells were then stained with AO/EtBr. Viable (green), apoptotic (yellow)
39
40 and necrotic (red) cells were scored under a confocal laser-scanning microscope. Magnification, 10x.
41
42 The images were representative of at least three independents experiments, with superimposable
43
44 results. b. Cells were treated with progesterone (25 μM) for 1-3 days and analysed for Caspase-3 and
45
46 cleaved-Caspase-3 expression using Western Blot (WB). The human α -Tubulin was used as internal
47
48 control. A representative WB is shown. Densitometric analysis of blots (n = 3) with specific levels of
49
50 cleaved-Caspase-3 normalized to the corresponding tubulin levels. Bars represent the mean \pm S.E.M.
51
52
53 $**P < 0.01$ vs untreated cells. c. NCI-H295R cells were treated with progesterone (25 μM), stained
54
55 with propidium iodide and analyzed for DNA content by flow cytometry. Histograms representative
56
57
58 of one out of three experiments were shown in the figure.
59
60
61

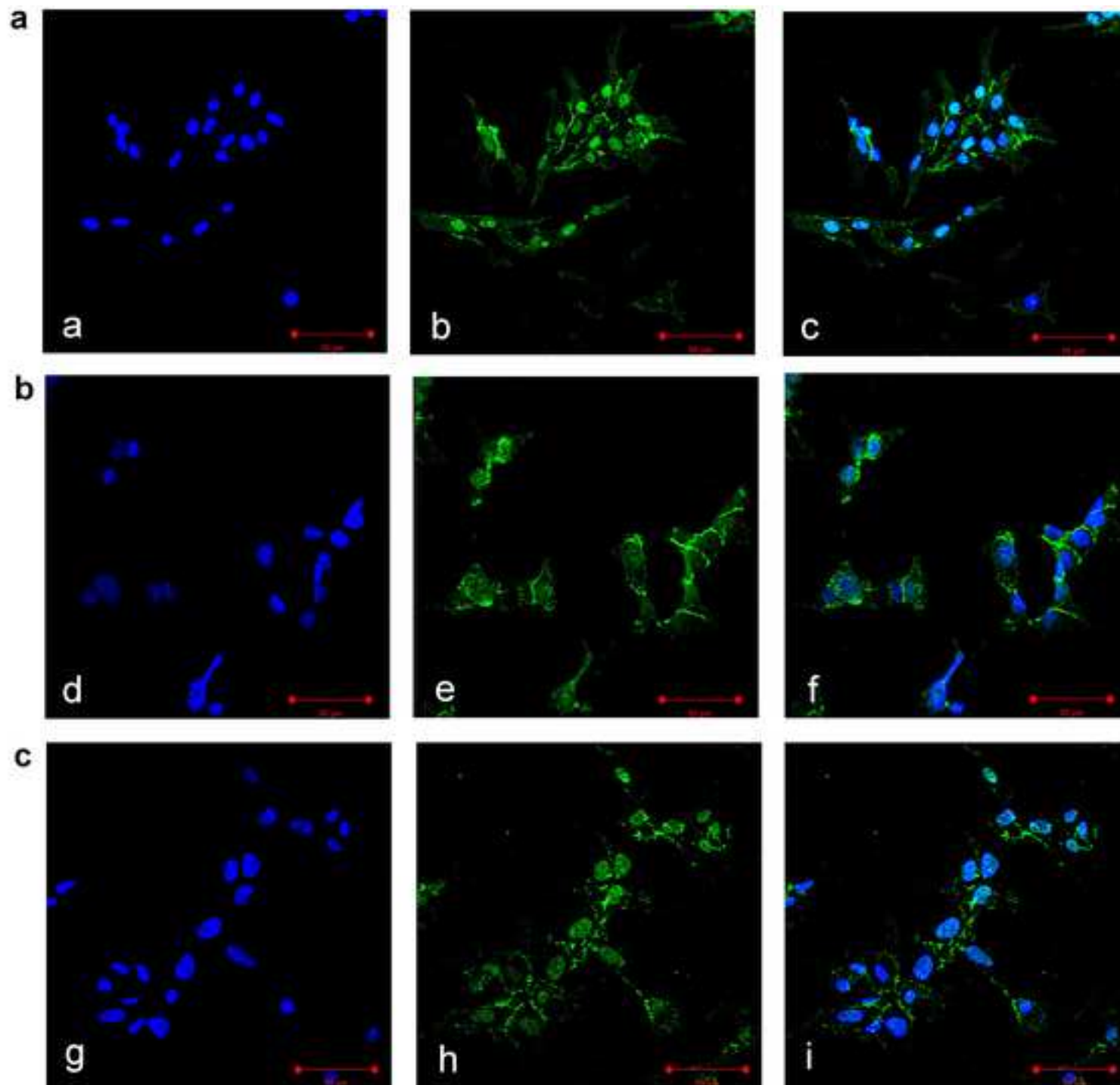
62
63
64
65

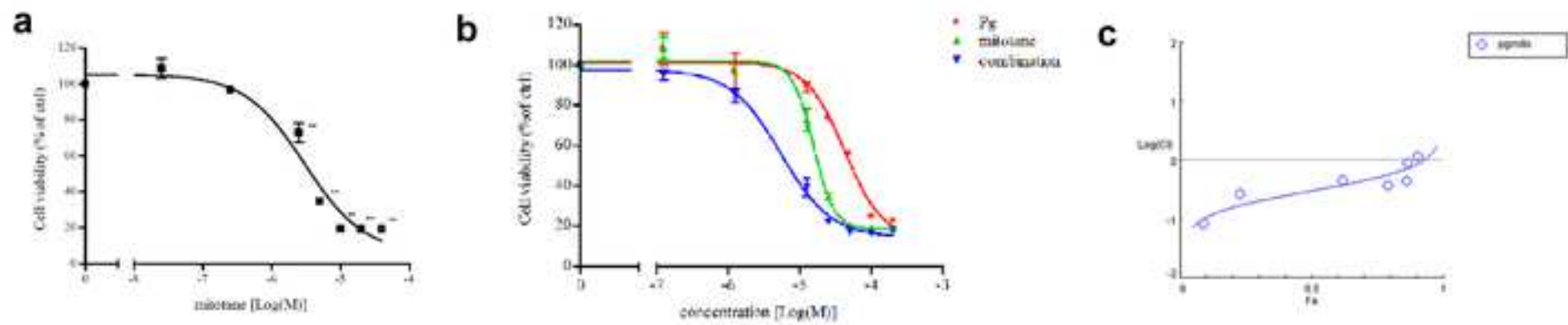
501 **Fig. 3: Progesterone treatment affects the subcellular localization of β -catenin in NCI-H295R**
1
502 **cells.** Cells were treated with progesterone (25 μ M) alone or in combination with mifepristone (100
3
503 nM) for 3 days. Untreated (**a**), progesterone-treated (**b**) progesterone-mifepristone-treated (**c**) cells
6
504 were analyzed for β -catenin localization following by incubation with Hoechst for nuclear staining.
8
505 Panels a, d, g: Hoechst; panel b, e, h: β -catenin; panel c, f, i: merge. The scale bar of 50 μ m is
11
506 automatically inserted by the software ZEN Black.
13

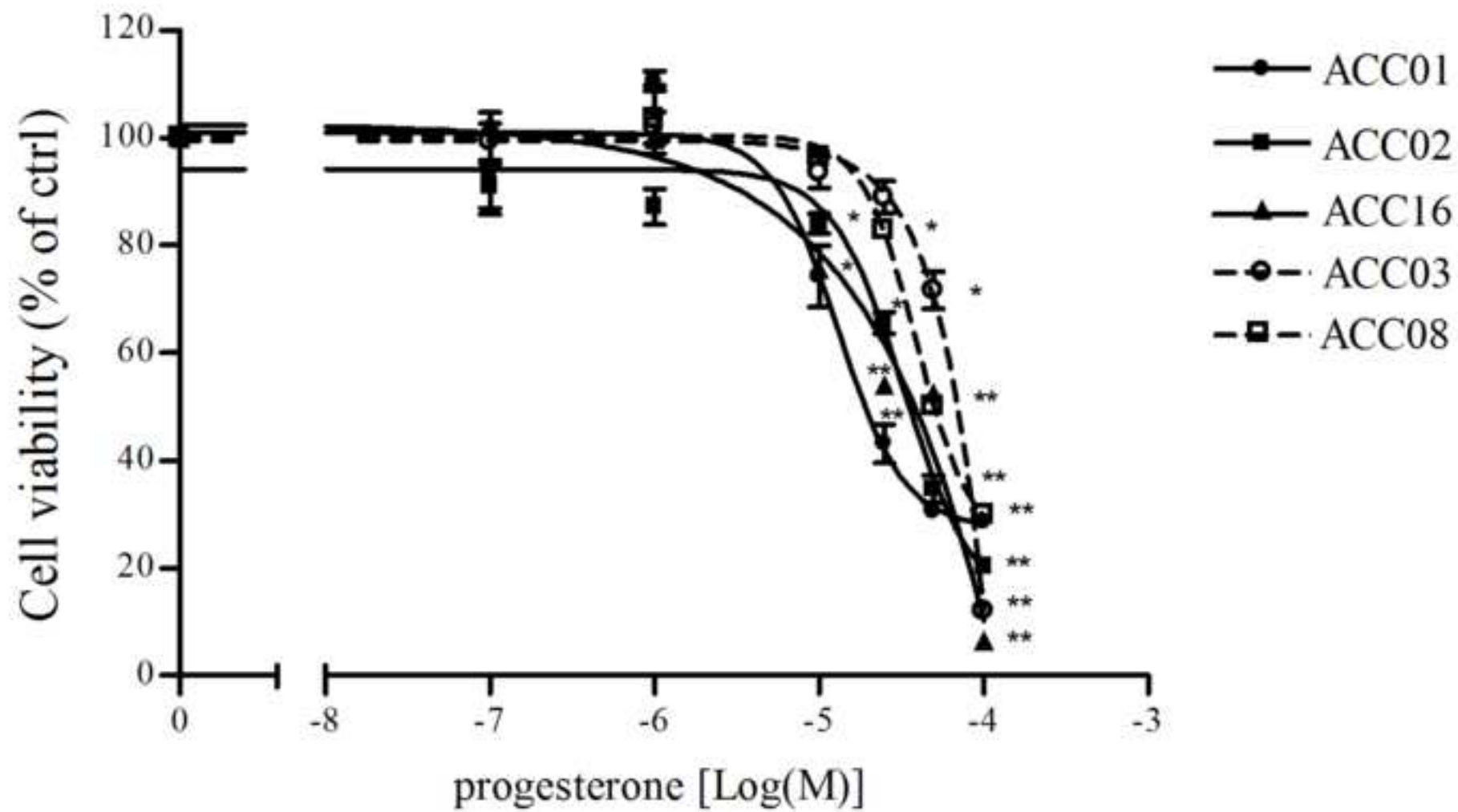
14
507 **Fig. 4: Effect of the combination of progesterone with mitotane in NCI-H295R cells. a.** NCI-
16
508 H295R cells were treated with increasing concentration of mitotane (25 nM - 40 μ M) for 4 days. Cell
18
509 viability was analyzed by MTT assay. Results are expressed as percent of viable cells vs control (ctrl)
20
510 cells. Data are the mean \pm S.E.M. of three experiments performed in triplicate. **** $P < 0.001$ vs ctrl.**
23
511 **b.** NCI-H295R cells exposed to increasing concentrations of progesterone and mitotane alone or in
25
512 combination at fixed concentration at 1:4 molar ratio (progesterone: mitotane) for 4 days. Data are
28
513 expressed as percent of viable cells vs control (ctrl) cells. Data are the mean \pm S.E.M. of three
30
514 experiments performed in triplicate. **c.** Cell viability from B was converted to Fraction affected (Fa)
33
515 values and resulting data were analyzed with CompuSyn software to obtain combination index (CI)
35
516 plot. Fa = 0, 100% cell viability; Fa = 1, 0% cell viability; CI value < 0.9 , synergism, CI = 0.9-1.1
38
517 additive effect and CI > 1.1 antagonism.
40

41
518 **Fig. 5: Cytotoxic effect of progesterone in human ACC primary cultures.** Cortisol secreting
43
519 ACC01 (\bullet), ACC02 (\blacksquare), ACC16 (\blacktriangle) and non secreting ACC03 (\circ), ACC08 (\square) primary cultures of
45
520 human ACC cells were treated with increasing concentrations of progesterone (0.1 – 100 μ M) for 4
47
521 days. Cell viability was evaluated by MTT assay. Results are expressed as percent of viable cells vs
50
522 control (ctrl) cells. Data are the mean \pm S.E.M. of three independent experiments performed in
53
523 triplicate. *** $P < 0.01$ vs ctrl; ** $P < 0.001$ vs ctrl.**
55
524
525
526
527
528
529
530

a**c****T****c****b**







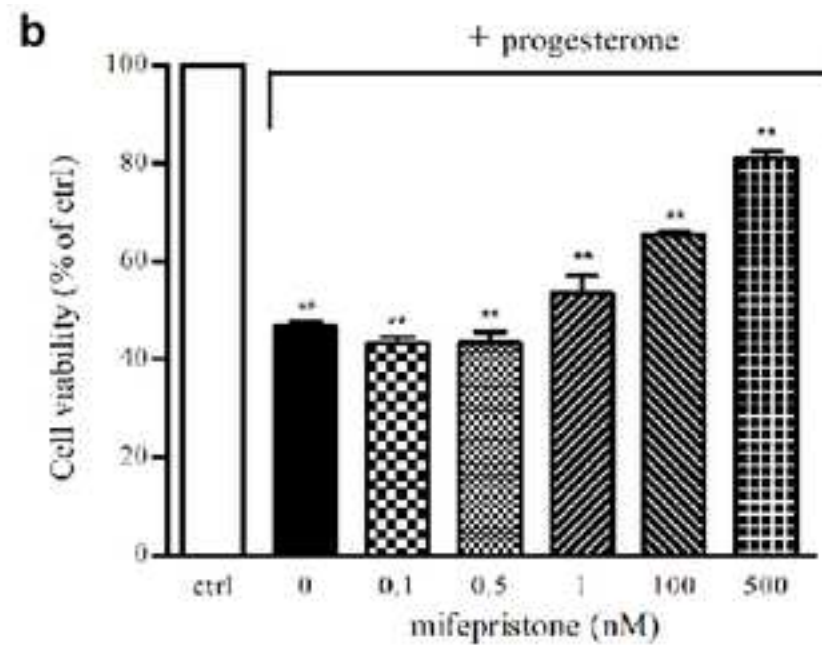
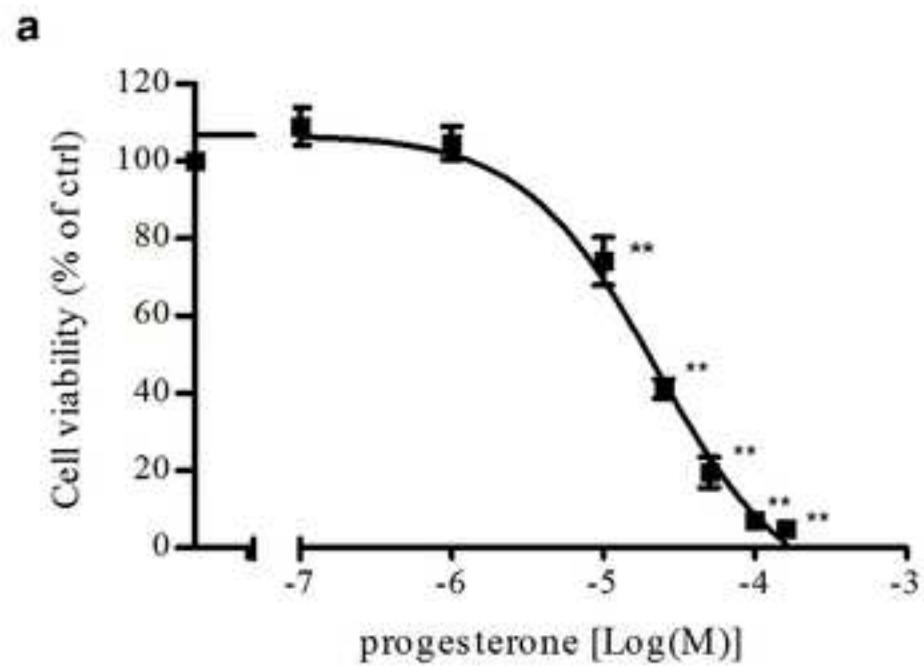


Table 1: Clinical characteristics of ACC patients.

Primary culture identification	Tumor specimen	Histology	Disease stage	Hormone hypersecretion	PgR expression
ACC01 Female 66 yr old	Primary ACC	Weiss score 8 Mitotic index: >50/50 HPF Ki67 70%	Stage IV (hepatic metastases)	Cortisol (severe Cushing's syndrome)	40%
ACC02 Female 63 yr old	Peritoneal metastases	Weiss score not available Mitotic index: >50/50 HPF Ki67 50%	Stage IV (peritoneal dissemination)	Cortisol (mild clinical signs of hypercortisolism)	70%
ACC16 Male 55 yr old	Primary ACC	Weiss score not available Mitotic index: 10/50 HPF Ki67 50%	Stage IV (bone and multiple abdominal lymphonodal metastases)	Cortisol (severe Cushing's syndrome)	40%
ACC03 Male 59 yr old	Local relapse of ACC	Weiss score 8 Mitotic index: 25/50 HPF Ki67 20%	Stage IV (left hypochondrium soft tissue relapse and peritoneal dissemination)	No secretion	3-5%
ACC08 Female 50 yr old	Lung metastases	Weiss score 8 Oncocytic features Mitotic index: 10/50 HPF Ki67 20%	Stage IV (lung and bone metastases)	No secretion	1-2%

Table 2. Immunofluorescence quantification of β -catenin expression.

		% mean \pm SEM
Untreated cells	nucleus	51.06 \pm 2.3
	cytoplasm	48.94 \pm 2.3
Progesterone-treated cells	nucleus	29.01 \pm 3.1
	cytoplasm	70.99 \pm 3.9 *
Progesterone –treated cells in the presence of mifepristone	nucleus	54.20 \pm 2.3
	cytoplasm	45.80 \pm 2.6

Cells were treated with progesterone (25 μ M) alone or in combination with mifepristone (100 nM) for 3 days. Quantification was performed using the ImageJ software. Several cells in different fields, randomly chosen, were quantified. * $P < 0.001$ vs nuclear localization



Click here to access/download
Supplementary Material
Supplemental Data.docx