

Application of alternative fixatives to formalin in diagnostic pathology

L. Benerini Gatta,¹ M. Cadei,¹ P. Balzarini,¹ S. Castriciano,² R. Paroni,² A. Verzeletti,³ V. Cortellini,³ F. De Ferrari,³ P. Grigolato¹

¹Second Department of Pathology, School of Medicine, University of Brescia;

²Copan Italia, Brescia; ³Department of Forensic Medicine, School of Medicine, University of Brescia, Italy

Abstract

Fixation is a critical step in the preparation of tissues for histopathology. The objective of this study was to investigate the effects of different fixatives vs formalin on proteins and DNA, and to evaluate alternative fixation for morphological diagnosis and nucleic acid preservation for molecular methods. Forty tissues were fixed for 24 h with six different fixatives: the *gold standard fixative* formalin, the *historical fixatives* Bouin and Hollande, and the *alternative fixatives* Greenfix, UPM and CyMol. Tissues were stained (Haematoxylin-Eosin, Periodic Acid Schiff, Trichromic, Alcian-blue, High Iron Diamine), and their antigenicity was determined by immunohistochemistry (performed with PAN-CK, CD31, Ki-67, S100, CD68, AML antibodies). DNA extraction, KRAS sequencing, FISH for CEP-17, and flow cytometry analysis of nuclear DNA content were applied. For cell morphology the alternative fixatives (Greenfix, UPM, CyMol) were equivalent to formalin. As expected, Hollande proved the best fixative for morphology. The morphology obtained with Bouin was comparable to that with formalin. Hollande was the best fixative for histochemistry. Bouin proved equivalent to formalin. The alternative fixatives were equivalent to formalin, although with greater variability in haematoxylin-eosin staining. It proved possible to obtain immunohistochemical staining largely equivalent to that following formalin-fixation with the following fixatives: Greenfix, Hollande, UPM and CyMol. The tissues fixed in Bouin did not provide results comparable to those obtained with formalin. The DNA extracted from samples fixed with alternative fixatives was found to be suitable for molecular analysis.

Introduction

The fixation method is a crucial step in the

histopathological process, as it determines the optimal conservation of the tissue before its analysis. However, this step is also one of the limiting factors in determining deep changes in the tissue. The current fixative of choice is formalin. The use of formalin has a long history in tissue fixation; in 1893, Ferdinand Blum discovered the power of the formaldehyde fixative and began numerous experiments on the use of formalin in histology and pathology.¹

This fixative has been used for 150 years and represents an optimal compromise.² It is widely used for preserving the morphology, antigenicity and molecular characteristics of most tissues, and is accepted by most pathologists after standardization of protocols. There are issues, however, that may be improved by an alternative fixation method, such as analysis of fixed tissue comparable with that of frozen tissue, which is better for the conservation of antigens, carbohydrates, lipids, and nucleic acids. Another consideration is that the pathology laboratory uses large amounts of formalin and often underestimates its hazards, because technicians and pathologists are exposed to a dilute solution of formaldehyde. Furthermore, the exposure is daily and in large quantities, so the risk of formaldehyde as a chemical carcinogen should not be underestimated.³⁻⁶ Over the past 20 years, several laboratories tried to replace formalin with other less toxic fixatives, but the results have been unsatisfactory, owing to alterations in cellular morphology and antigenicity.⁷ The search for an alternative to formalin fixation, which offers better technical performance and greater protection for health workers, is timely and important.⁸

The purpose of this study was to investigate the effects of different fixatives on the characteristics of tissues sent to the laboratory of pathology. The tissues used in this study were sampled and fixed with six different fixatives for 24 h: formalin, Greenfix, UPM, CyMol, Bouin, and Bouin/Hollande (for simplicity, this mixture is named Hollande). Greenfix is ethanediol and alcohol based and completely free of formaldehyde, and is the next generation of fixatives. In this work we also took into account other substances currently used in cytology: UPM, which is a combination of ethanol, methanol, isopropyl alcohol and formalin; and CyMol, which is a combination of ethanol, methanol and isopropyl alcohol. Bouin and Hollande, historical fixatives that incorporate picric acid, were used for morphological and histochemical evaluations. Morphology, histochemistry, immunohistochemistry and flow cytometry were assessed.

Another consideration is that some recently discovered factors such as gene amplification and somatic mutations that predict responses to biological therapies in cancer patients

Correspondence: Dr. Luisa Benerini Gatta, Anatomia e Istologia Patologica II, Ple Spedali Civili 1, 25123 Brescia, Italy.
Tel. +39.030.3995830 – Fax: +39.030.3995053.
E-mail: lbenerini@virgilio.it

Key words: fixation, histochemistry, immunohistochemistry, molecular biology

Acknowledgments: the would like to thank Ms. A. Galletti, Ms. L. Fontana, Ms. T. Gulotta and Mr. F. Alpi for their technical support. Use of the ABI PRISM® 310 Genetic Analyzer (Applied Biosystem, Foster City, CA, USA) was provided by the Department of Forensic Medicine, University of Brescia. LBG was supported by a fellowship from the *Beretta Foundation*, Brescia, Italy. The work was supported by ex-60% funds from the University of Brescia.

Received for publication: 19 May 2011.

Accepted for publication: 10 January 2012.

This work is licensed under a Creative Commons Attribution NonCommercial 3.0 License (CC BY-NC 3.0).

©Copyright L. Benerini Gatta et al., 2012

Licensee PAGEPress, Italy

European Journal of Histochemistry 2012; 56:e12

doi:10.4081/ejh.2012.e12

require samples suitable for advanced methods such as gene sequencing and FISH (fluorescence in situ hybridization). Therefore, the fixed tissue samples were analyzed for the applicability of these molecular methods.

Materials and Methods

Tissue sampling and tissue fixation

Forty specimens were collected at the 2nd Department of Pathology, Spedali Civili, Brescia, Italy. For this study each biopsy was split into six parts and fixed with Formalin (Bio-optica, Milano, Italy), Bouin, Hollande, Greenfix (Diapath, Bergamo, Italy), UPM or CyMol (Copan Italia, Brescia, Italy). The sources of the biopsies are shown in Table 1. The chemical and bio-hazard characteristics of the fixatives are shown in Table 2. The duration of the fixation process was 24 h. All specimens were then paraffin-embedded.

Histochemistry

Haematoxylin-eosin (H&E), Alcian-blue (pH 2.5), Periodic Acid Schiff (PAS), Masson's Trichrome, and High Iron Diamine, were applied using standard staining protocols.

Immunohistochemistry

The proteins investigated were: Cytokeratin (CK-PAN Clone MNF116, Dako A/S, Glostrup, Denmark), Ki-67 (Clone MIB-1, Dako A/S), CD31 (Clone 1A10, Leica Biosystems New Castle Ltd., Benton Lene, UK), S100 (Rabbit Polyclonal Antibody, Leica Biosystems New Castle Ltd.), CD68 (Clone KP1, Dako A/S), and Alpha-smooth muscle actin (Clone 1A4, Biocare Medical, LLC, Concord, CA, USA). Immunohistochemical analysis was performed on 4 µm sections of fixed, paraffin-embedded tissues. After deparaffinization and hydration, specific antigen retrieval was applied. All samples were processed according to standard protocols. A Novolink Polymer Detecting System kit (Menarini, Firenze, Italy), DAB chromogen substrate, and H&E counterstains were used. The technical details for each antibody and fixative are shown in Table 3.

Digital image analysis

Digital images were prepared for analysis using the ImageJR computer program. ImageJR is a Java image-processing program developed by the National Institutes of Health (Bethesda, MD, USA, <http://rsb.info.nih.gov/ij/download.html>). The colour intensity of each image was automatically measured using a colour deconvolution plugin specific for histochemistry or immunohistochemistry.⁹ Colour contrast was measured using colour histogram analysis.

DNA extraction, PCR and sequencing

Genomic DNA was obtained from four 10 µm thick sections of paraffin-embedded tissue. All sections were placed in 2 mL micro centrifuge tubes and dewaxed with successive washes of xylene and absolute, 95% and 70% ethanol. After an overnight digestion with K proteinase at 56°C, DNA was extracted and purified using a NucleoSpin Tissue Kit (Macherey-Nagel, Düren, Germany) according to the manufacturer's protocol. KRAS PCR was applied to amplify 200 bases of exon 2 with a modified protocol previously described.¹⁰ Positive and negative controls were used. The sensitivity curve of the KRAS PCR was determined using 200 ng, 20 ng and 2 ng of the genomic DNA. The PCR products were sequenced using standard protocols (Applied Biosystem, Foster City, CA, USA). All tests were performed in triplicate to confirm the reproducibility of the results.

FISH analysis

FISH analysis at interphase was performed using a centromeric specific probe mapping to chromosome 17 (SpectrumGreen, Vysis, Downers Grove, IL, USA). Sections 3 µm thick

were prepared for FISH analysis: the sections were de-paraffinised by three 10 minute washes in xylene, followed by two five minute washes with 100% ethanol, then processed using pre-treatment kit 1 (Vysis). Briefly, sections were treated with 0.2N HCl for 20 min, washed with buffer 1 and 2 (Vysis) for 3 min, then incubated in pre-treatment solution for 30 min at 81°C. After washing with distilled water and buffer 1, the samples were digested with protease solution for 45 min at 37°C. Next, the slides were rinsed with Buffer 1 and 2 for 5 min and dried, then fixed with buffered formalin at 4% final concentration for 1 min at room temperature, rinsed with buffer 1 and 2 for 5 min, then dehydrated in consecutive 70%, 80% and 100% ethanol solutions for 1 min each before being dried. Ten µL of centromeric probe for chromosome 17 was applied to each slide and each section was cover-slipped. Denaturation was achieved by incubating the slide at 80°C for ten min in a Hybridizer; hybridization was undertaken at 37°C for 14 h. The cover slips were then removed and the slides were immersed in 0.3 NP40 SSC2X for 1

min at room temperature, then in 0.3 NP40 SSC2X for 2 min at 72°C. The slides were dried and counterstained with propidium iodide (Vysis). They were examined using a SpectrumGreen filter for probe visualisation and a Texas Red filter for visualising the propidium iodide nuclear counterstain. The signals were recorded using a Nikon CCD camera.

Table 1. Tissue collection.

Number of samples	
Anatomical site	
Lung	8
Bronchus	4
Liver	8
Colon	2
Ovary	8
Vulva	4
Kidney	2
Skin	4
Total	40

Table 2. Chemical and bio-hazard characteristics of formalin and alternative fixatives.

Fixatives	Chemical composition	pH	Health and safety	Carcinogenic
Formalin (neutral buffered)	Formaldehyde 4%	7-7.2	R23/24/25; R34; R40 S26 30/37/39; S45; S21	Yes
Bouin's fixative	Picric acid Formaldehyde Glacial acetic acid	1.75	R40; R43 S26; S36/37; S45	Yes
Hollande's fixative	Picric acid Copper acetate Formaldehyde Mercury Chloruro II	3.9	R23/24/25; R43 S28; S45	No
Greenfix	Ethandial Ethanol	4-5.5	R10; R36/38; S7; S26; S36/37	No
UPM	Ethanol Methanol 2-Propanol Formalin	Not applicable	ND	ND
CyMol	Ethanol Methanol 2-Propanol	Not applicable	R11; R23/24/25; R36; R39; R67 S16; S33; S23; S24/25	No

ND, not determined, research product.

Table 3. Immunohistochemical methods used for the different fixatives.

Primary antibody	Antigen	Dilution	Antigen retrieval (AR)	Fixative*
PAN-CK	Epithelial cells	1:200	Protease XIV 10 min	F, B, H
CD31	Endothelial cells	1:50	3 Cycles Tris/EDTA 1 Cycle Tris/EDTA	F, B, H G, U, C
Ki-67	Ki-67 antigen	1: 50	Citrate buffer	A
S100	S100 protein	1: 700	No AR needed	A
CD68	Macrophages	1: 50	Protease XIV 10 min	A
AML	Actin (Smooth Muscle)	1: 100	No AR needed	A

*F, formalin; B, Bouin; H, Hollande; G, Greenfix; U, UPM; C, CyMol; A, All fixatives.

Flow cytometry analysis of DNA content

Flow cytometry was performed on cell nuclei extracted from 50 μm sections of paraffin-embedded tissue fixed with one of the six different fixatives. Sections were deparaffinized in xylene and rehydrated in a descending ethanol series (100%, 95%, 70%, 50%) to deionised water. The hydrated samples were digested in a solution of 0.25% pepsin (Roche, Basel, Switzerland) for 1 h, then melted in 0.1N hydrochloric acid (pH 1.5) at 37°C. After centrifugation at 1500 rpm at room temperature, pepsin digestion was stopped with a solution of phosphate buffered saline (PBS) at pH 8.6 and the nuclear suspension was filtered through a 70 μm nylon mesh to remove any unfractionated tissue or other large debris. DNA was stained overnight with propidium iodide (10 $\mu\text{g}/\text{mL}$) (Sigma-Aldrich, St. Louis, MO, USA) resuspended in 0.1% sodium citrate buffer, and nuclei were analyzed using a Beckman Coulter Epics XL flow cytometer (Beckman Coulter Inc., Brea, CA, USA) equipped with laser excitation. Before analysis the instrument was calibrated with flow-check fluorospheres (Beckman Coulter Inc.) and the DNA channel was set using normal human lymphoid tissue. DNA histograms were obtained from at least 5000 cells per sample cells and were considered not diploid when at least two separate G0-G1 peaks were present. The DNA index (DI) was calculated from each histogram as the ratio of the G0-G1 peak of the non-diploid population to the G0-G1 peak of normal cells present in the tumour region. The coefficient of variation (CV) of the diploid G0-G1 peak was used as a parameter of quality. The analysis software was MultiPlus AV (MultiParameter Data Analysis Software).

Statistical analysis

Statistical analysis was performed using the Student t-test. A value of $P < 0.05$ was considered statistically significant.

Results

Effects of alternative fixation on cell morphology

The cell morphology of all samples was analysed. The representative sample shown is liver tissue after fixation using formalin (Figure 1A), Hollande (Figure 1B), Bouin (Figure 1C), Greenfix (Figure 1D), UPM (Figure 1E) and CyMol (Figure 1F) as fixatives followed by paraffin-embedding. Thereafter all samples were stained with haematoxylin-eosin. Light

microscopy revealed that Greenfix, UPM and CyMol preserved cell integrity, giving morphological information similar to that obtained with formalin: no differences were identified in cell architecture, cytoplasmic and nuclear morphology, or tinctorial reactions. The morphology of samples fixed with UPM and CyMol in particular offered a good definition of hepatocytes and portal tracts. Hollande showed the same results as Greenfix with the exception of an excessive tinctorial reaction. A similar morphology was seen in sections from tissues fixed with Bouin fixative, with a higher resolution of chromatin in the nucleolus, and the nuclear matrix background being more lightly stained. The mean and standard deviation of all haematoxylin-eosin (H&E) staining intensities, as assessed by Colour Deconvolution and colour intensity analysis of the colour histogram, are given in Table 4. Haematoxylin intensity was significantly lower

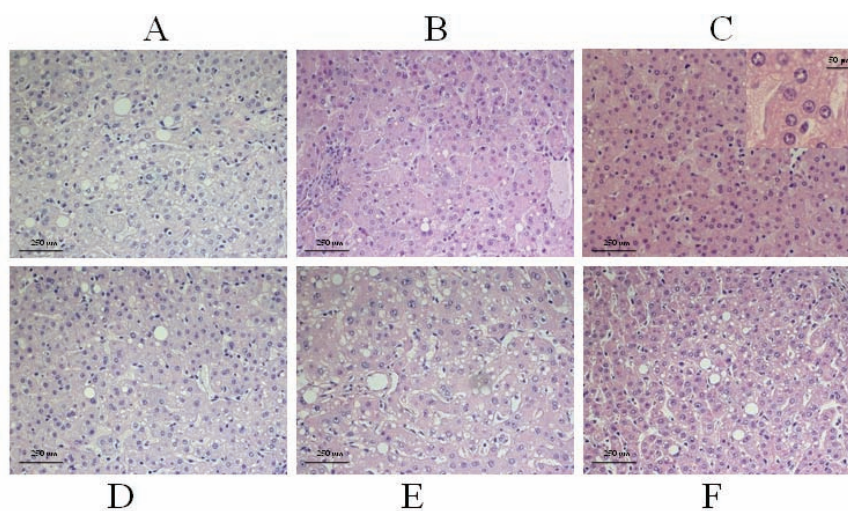


Figure 1. Hematoxylin-eosin staining (H&E). Representative sections of H&E stained liver biopsy following fixation with: A) formalin; B), Hollande; C), Bouin; D), Greenfix; E), UPM; F), CyMol.

Table 4. Colour intensity analysis of the histochemical staining.

Staining	CDP	Colour intensity (mean \pm ds)					
		Formalin	Hollande	Bouin	Greenfix	UMP	CyMol
H&E	1	199.14 \pm 2.01	201.04 \pm 4.22	216.51 \pm 2.06*	200.56 \pm 4.09	206.27 \pm 2.82*	206.66 \pm 4.27*
	2	208.16 \pm 1.61	190.28 \pm 5.34*	184.01 \pm 4*	207.22 \pm 4.34*	196.44 \pm 5.22*	182.36 \pm 9.34*
P A S	1	211.82 \pm 9.42	165.93 \pm 7.26*	176.54 \pm 6.99*	182.14 \pm 8.83*	185.47 \pm 5.06*	192.03 \pm 8.3*
	2	32.23 \pm 4.51	14.46 \pm 1.99*	4.83 \pm 0.41*	15.89 \pm 4.58*	31.47 \pm 0.32	8.02 \pm 0.46*
Alcian-blue	1	129.55 \pm 9.69	170.05 \pm 12.89*	183.17 \pm 7.45*	158.37 \pm 11.89*	150.17 \pm 4.49*	159.53 \pm 3.42*
	2	135.42 \pm 5.65	166.25 \pm 7.54*	180.74 \pm 10.02*	192.33 \pm 4.58*	189.92 \pm 2.2*	186.79 \pm 7.97*
Trichrome	1	145.96 \pm 12.94	167.7 \pm 1.39*	178.31 \pm 17.48*	145.03 \pm 15.13	134.76 \pm 20.21	123.95 \pm 12.73*
	2	202.57 \pm 11.32	176.03 \pm 12.05*	228.41 \pm 4.92*	179.54 \pm 9.09*	204.6 \pm 13.35	163.29 \pm 8.16*
HID	1A	189.04 \pm 1.32	166.40 \pm 47.73	182.17 \pm 0.99*	159.29 \pm 45.41	163.83 \pm 53.31	175.33 \pm 23.33
	1B	168.19 \pm 49.12	102.42 \pm 2.38	104.33 \pm 1.32	113.92 \pm 1.5	104.18 \pm 7.74	151.83 \pm 2.23
	2A	111.02 \pm 14.6	135 \pm 3*	127.72 \pm 1.61	137.96 \pm 5.18*	111.9 \pm 6.15	140.3 \pm 18.74*
	2B	176.5 \pm 2.82	193.31 \pm 3.8*	183.41 \pm 3.88*	190.55 \pm 1.02*	194.10 \pm 2.94*	193.54 \pm 2.5*

All staining slides were examined under the light microscope (Olympus, Vanox, AHB73). One representative field from each section was selected and digitally acquired, using 20X magnification objective lens. All images were captured using the same light filter settings. The colour deconvolution plugin (CDP) was applied to each image and the colour intensity histogram was determined. Ten areas of each image were analysed (with mean colour intensity recovery) in order to determine the average intensity of the CDP colour 1 and 2. Colour scale: values 0-255, with 0, maximum value; 255, minimum value. * $P < 0.05$; Colour 1A, stroma; colour 1B, cartilage; colour 2A, secret 1; colour 2B, secret 2; HID, high iron diamine.

with Bouin, UPM, and Cymol fixation. Eosin intensity was greater with all alternative fixatives. The H&E staining contrast was also measured and the values are given in Table 5. The samples fixed in Hollande or Bouin offered the best colour contrast, although formalin is currently regarded as the gold standard.

Histochemical and immunohistochemical analysis from alternative fixatives

For histochemical staining the following qualitative parameters were assessed double-blind: epithelial-stromal contrast, the prevalence of positivity, and the intensity of colour. The stains used were PAS, Masson's Trichrome and Alcian-blue, and High Iron Diamine (Figure 2). Microscopic examination of the bronchial wall stained with PAS (Figure 2 A/I) and fixed with formalin revealed good staining and clear cartilage identification. Greenfix, UPM, CyMol and Hollande allowed to show the secretion, while in tissue fixed with Bouin the staining was very intense. With Alcian-blue staining (Figure 2 A/II), Hollande was the best fixative; tissue fixed with Bouin, UPM and Cymol showed Alcian-blue staining spreading into the cartilage matrix. For UPM and Cymol-fixed tissue, staining was very selective for chondrocytes. The samples fixed with Greenfix showed less intense staining but retained colour fidelity. With Masson's Trichrome (Figure 2 A/III), formalin gave good results in terms of colour, contrast, and positivity; the Greenfix and Hollande fixatives were superior as the tissues fixed in these showed greater definition, while samples fixed with Bouin offered less definition. CyMol fixation proved superior to formalin in terms of colour bright-

ness and definition, while UPM gave results equivalent to formalin. Good results were obtained with formalin and High Iron Diamine staining. Greenfix fixation gave results equivalent to formalin, while UPM and CyMol were better, as were the fixatives Hollande and Bouin (Figure 2 A/IV).

All histochemical staining was also analysed using the ImageJ[®] program and the quantitative results of colour intensity and contrast are given in Tables 4 and 5. All samples fixed with the alternative fixatives had higher colour intensities than formalin. The Alcian-blue staining of the samples fixed with alternative fixatives had a lower colour intensity. The biopsies fixed with Hollande and Bouin had a

higher colour intensity, those fixed in Greenfix and UPM showed an equivalent staining intensity and those fixed with CyMol showed only minor differences. High Iron Diamine staining of the stroma and cartilage of all samples was equivalent to formalin, while the secrete colour intensity was greater with all alternative fixatives. Very high colour contrast was obtained with PAS staining of samples fixed in Hollande, Bouin, UPM, or CyMol; with Masson's Trichrome staining of UPM and CyMol-fixed tissue; and with High Iron Diamine staining of Bouin-fixed sections. The colour contrast was equivalent to formalin for all other samples.

The immunoreactions of the antibodies

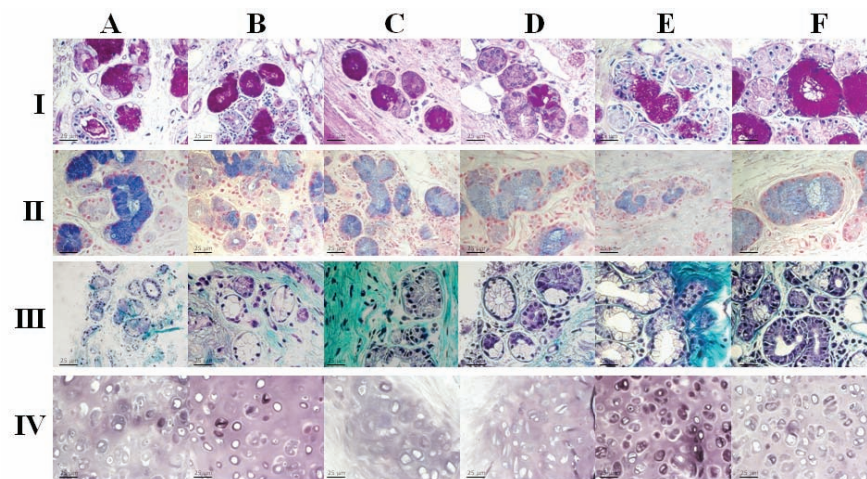


Figure 2. Histochemistry. Bronchial tissue stained with: I), PAS; II) Alcian-blue; III) Trichrome; IV) High Iron Diamine (IV), following fixation with: A) formalin; B) Hollande; C) Bouin; D), Greenfix; E), UPM; F), CyMol.

Table 5. Colour contrast analysis of the histochemical staining.

Staining	M	Colour contrast (mean±ds)					
		Formalin	Hollande	Bouin	Greenfix	UMP	CyMol
H&E	<i>r</i>	174.36±8.67	187.12±3.33*	200.77±3.71*	177.77±2.18	198.2±6.34*	184.5±9.95
	<i>g</i>	163.997±9.21	159.67±3.68*	163.88±3.43	171.66±2.63	175.94±4.74	160.44±10.7
	<i>b</i>	177.07±10.39	189.03±3.06	195.88±4.15*	180.44±3.97	190.71±8.97	180.36±12.56
PAS	<i>r</i>	224.95±8.88	186.88±13.94*	201.88±8.28*	211.48±5.61	193.87±6.78*	187.94±4.45*
	<i>g</i>	204.76±17.22	150.44±24.35*	152.25±11.97*	196.51±16.76*	167.3±14.09*	120.55±16.17*
	<i>b</i>	229.73±8.66	204.41±10.32*	219.37±6.74	233.91±3.53	208.62±5.22*	200.77±6.81*
Alcian	<i>r</i>	195.97±12.73	209.71±6.36	201.9±5.22	194.77±2.46	199.95±4.61	198.13±1.92
	<i>g</i>	196.63±10.98	198.69±6.1	191.3±4.92	184.25±2.38	195.06±5.51	197.04±1.63
	<i>b</i>	217.41±5.43	204.77±6.72	200.42±3.37	187.6±2.6*	199.03±3.94*	201.41±1.52*
Trichrome	<i>r</i>	200.72 ±13.65	203.88±8.81	161.59±4.45*	192.5±7.6	120.03±25.19*	147.4±11.65*
	<i>b</i>	208.11±11.22	205.99±12.56	215.36±1.1	193.07±9.07	167.18±21.79*	152.98±10.61*
	<i>b</i>	215.57±6.55	219.44±8.63	210.39±0.95	212.27±3.96	189.57±13.67*	167.78±9.97*
HID	<i>r</i>	157.68±3.85	160.14±6.28	155.26±3.12	157.33±1.88	150.13±2.43*	160.01±1.54
	<i>g</i>	160.54±2.28	166.92±4.8	155.2±1.97*	156.72±3.34	157.43±1.22	164.23±1.64*
	<i>b</i>	161.46±2.71	167.07±2.94*	156.02±2.16*	155.2±2.63*	157.63±0.97	163.22±1.62

The colour contrast of each slide was measured automatically using the colour histogram analysis of the ImageJR computer program. HID, high iron diamine; M, colour histogram mean; *r*, red; *g*, green; *b*, blue. Colour scale: values 0-255, with 0, maximum value; 255, minimum value. *P<0.05.

PAN-CK, CD31, Ki-67, S100, CD68, and AML were evaluated. The specificity of the reactions was evaluated in a double-blind screening. The colour intensity of the DAB-specific signal and the background noise was measured using the ImageJ[®] program. The results for all the immunoreactions are given in Table 6. As shown in Figure 3 for the ovarian cancer tissue in PAN-CK (panel I), immunoreactions with tissue fixed in formalin gave excellent positive diffuse and dense staining. Use of Greenfix gave excellent positive diffuse staining, while good focal positivity was obtained with Hollande fixation. With Bouin a positive medium-weak focal staining was seen; with UPM fixation the staining was excellently intense and widespread, with good selective membrane staining; while with CyMol fixation, PAN-CK gave a good positive spread, but was less selective than in tissues fixed with UPM. After fixation with formalin or Greenfix, Ki-67 staining showed good, intense positivity (panel II), Bouin Hollande fixation resulted in a weaker positive staining than formalin, while the tissues fixed with UPM or CyMol gave very weak positivity. For CD31 the colour intensity was minor with Bouin or CyMol fixation. The CD68-specific signal was better with all alternative fixatives than with formalin, although all fixatives resulted in a higher background staining than found with formalin fixation. Equivalent intensity of colour signal was obtained in tissues fixed with Hollande, Bouin, or UPM. Significantly higher colour signal was obtained in tissues fixed with Greenfix or CyMol. The background noise was equivalent for all fixatives except UPM, with which there was lower background staining.

Alternative fixation and quality of molecular biology methods

Molecular analysis in pathology is of increasing importance in diagnostics and for this reason it is essential that tissues are fixed and processed properly with fixatives that do not damage the nuclear material and thus prevent molecular genetic analysis. We analyzed the following parameters: quality and quantity of DNA extracted from fixed tissues, and the specificity and sensitivity of PCR diagnostic

applicability of these samples. DNA extracted from samples fixed in Greenfix gave better results than those fixed in formalin: a higher percentage of high molecular weight DNA was obtained (as determined by the presence of a discrete band with high molecular weight). The UPM and CyMol fixatives offered comparable results to formalin. With Bouin or Hollande fixation, the DNA migrated on an agarose gel as a smear (Figure 4A). PCR was performed for the KRAS gene and the specificity was evaluat-

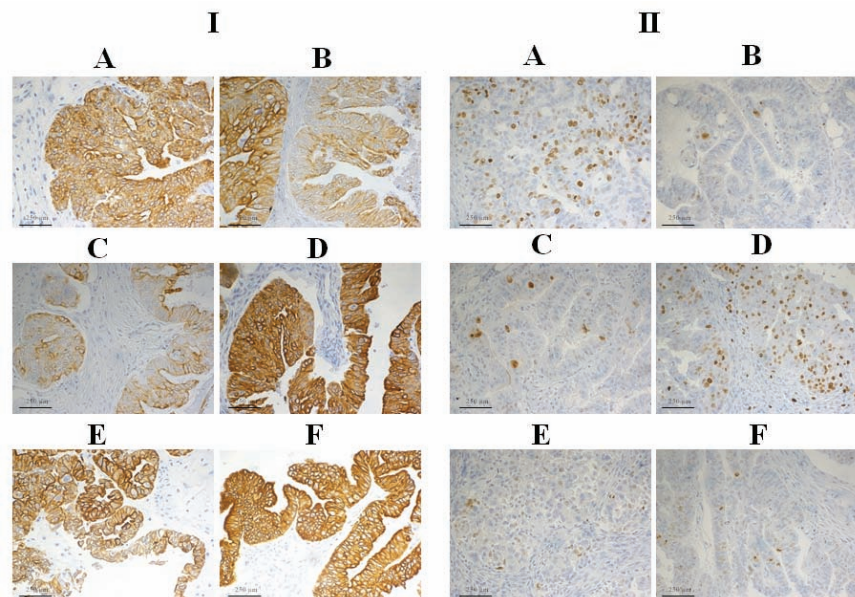


Figure 3. Immunohistochemistry. Immunohistochemical staining with of mixed endometrioid serous papillary carcinoma of ovary using: I), CK-PAN and II), Ki-67 antibodies following fixation with: A) formalin; B) Hollande; C) Bouin; D), Greenfix; E), UPM; F), CyMol.

Table 6. Colour intensity analysis of the immunohistochemical staining.

Immunostaining	CDP	Colour intensity (mean±ds)					UMPCyMol
		Formalin	Hollande	Bouin	Greenfix	UMPCyMol	
CK-PAN	1	247.66±3	241.95±5.27	220.01±14.31*	244.65±0.62	242.58±3.3	257.67±14.22
	2A	120.68±9	102.58±10.42*	158.73±4.3*	64.74±6.21*	95.65±7.09*	95.65±13.47*
	2B	239.14±2.58	232.22±6.44	217.25±6.18*	231.77±6.29	250.42±1.65*	251.41±2.88*
Ki-67	1	220.37±2.17	211.57±2.75*	208.94±20.03*	204.78±7.17*	217.68±1.78	214.38±2.55*
	2A	79.14±12.33	54.11±2.8*	51.24±23.99	59.15±10.55*	124.68±26.51*	88.69±3.33
	2B	230±10.24	225.34±5.83	225.18±2	212.3±5.17*	208.91±5.05*	213.24±5.29*
CD31	1	177.41±3.43	182.61±3.92	165.86±4.07*	176.17±2.01	179.43±3.82	163.47±9.37*
	2A	57.84±8.93	89.88±3.12*	36.44±8.02*	32.31±3.68*	27.54±6.24*	31.76±8.06*
	2B	183.78±3.29	179.46±2.33	171.51±6.49*	177.32±7.37	181.25±1.52	158±9.81*
CD68	1	224.82±1.89	206.75±4.71*	194.09±3.84*	226.46±3.96	223.23±3.25	239.79±2.43*
	2A	52.88±14.21	26.9±7.65*	20.86±4.64*	12.29±2.23*	23.31±4.83*	23.34±8.63*
	2B	211.85±7.3	190.82±9.29*	162.24±15.39*	138.38±3.82*	146.39±8.61*	139.55±9.68*
AML	1	167.27±7.38	166.19±1.07	172.2±1.76	170.01±2.14	177.41±3.29*	184.85±4.25*
	2A	37.897±9.048	41.37±1.17	42.17±1.22	16.67±1.01*	13.46±3.94*	19.28±4.37*
	2B	195.39±1.95	177.46±0.8*	179.52±1.12*	177.52±0.68*	177.39±1.36*	187.72±1.85*
S100	1	202.09±3.49	156.26±51	219.66±1.97*	206.69±0.87*	200.65±0.32	214±9.85
	2A	18.35±3.32	21.64±0.58	21.77±0.93	48.88±5.66*	21.56±2.16	24.26±1.11*
	2B	214.22±10.98	222.29±0.96	220.46±1.18	215.76±4.26	183.32±9.94*	222.39±1.77

Digital images were prepared for analysis using the ImageJ[®] computer program. Colour intensity of each image was measured automatically using a colour deconvolution plugin specific for immunohistochemistry. 1, haematoxylin; 2A, specific signal; 2B, background. Colour scale: values 0-255, with 0, maximum value; 255, minimum value. *P<0.05.

ed by electrophoresis, and the sensitivity with serial dilutions of DNA. With regard to specificity, Greenfix, UPM and CyMol were comparable with formalin, while Hollande and Bouin produced unsatisfactory results. To assess the sensitivity of alternative fixatives, PCR was performed on serially diluted DNA (200 ng - 20 ng - 2 ng) (Figure 4B). DNA extracted from samples fixed with alternative fixatives was found to be suitable for molecular sequence analysis. Indeed, the electropherograms showed high, defined peaks and little background noise (no nonspecific peaks) (Figure 4C). For FISH analysis, a good fixative should preserve the nuclear morphology while concomitantly permeabilizing all cells for the labeled probe. We evaluated the biopsies of liver and ovary tissues after hybridization with CEP17 probe. The results obtained in this study indicate that Greenfix, UPM and Cymol, provided the best maintenance of morphology, nuclear and probe signals. Bouin's fixative and Hollande's fixative gave very poor results indicating deterioration in quality of interphase FISH signals (Figure 5). Flow cytometry was performed on nuclei obtained from samples fixed in formalin, Bouin, Hollande, Greenfix, UPM and CyMol. The DNA index (DI) was always equal to 1 (normal tissue). The sub-G0-

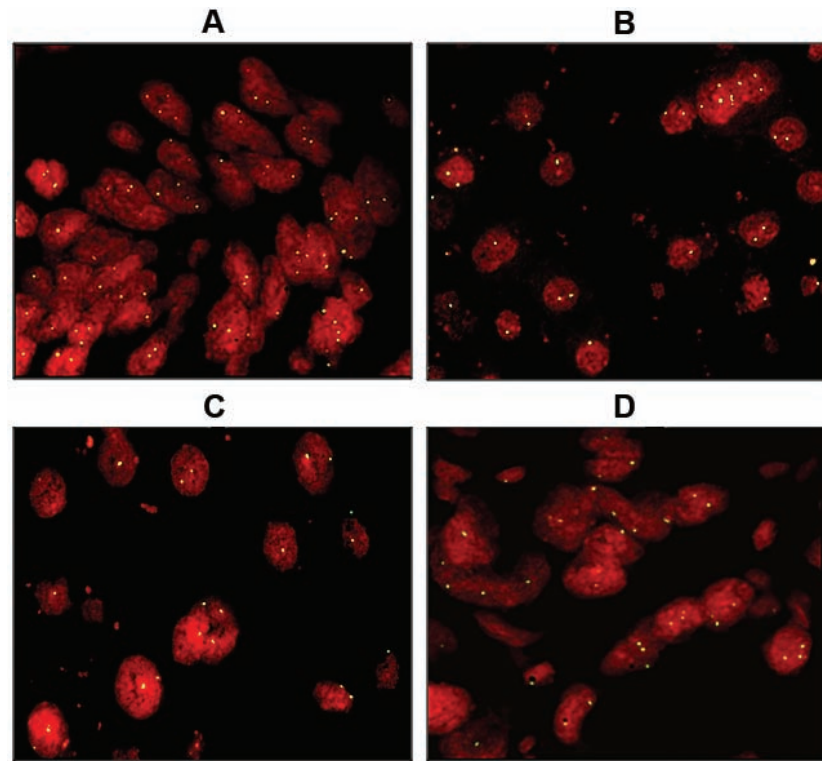


Figure 5. FISH analysis. The signal intensity of the centromeric probe is similar in: A), formalin and B), Greenfix; C), UPM and D) CyMol fixed liver tissue.

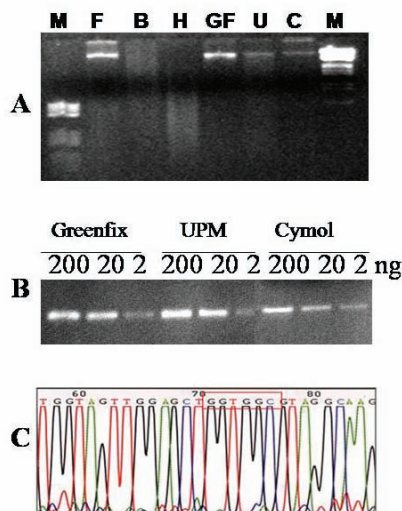


Figure 4. Molecular biology. A), electrophoresis of DNA extracted from liver tissue fixed with formalin (F), Bouin (B), Hollande (H), Greenfix (GF), UPM (U) and CyMol (C). The bands are similar in F, GF, U and C. B), PCR obtained with 200, 20 and 2 ng of DNA extracted from tissues fixed in Greenfix, UPM, CyMol. The amplification was achieved even at low concentrations of DNA with the three alternative fixatives. C), sequence analysis of the DNA amplified and purified from samples fixed with CyMol demonstrated a K-RAS wild type.

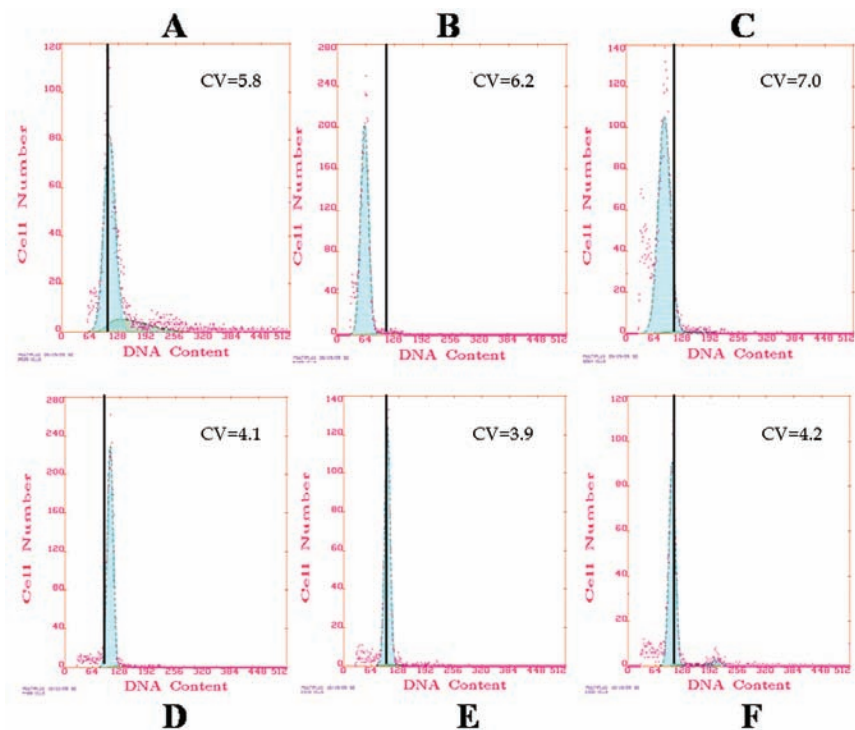


Figure 6. Flow cytometry analysis of DNA. Flow cytometry analysis of DNA content of lung tissue showed that the fixatives Greenfix, UPM, CyMol (D-E-F) gave results similar to formalin fixation (A). Shift left of the control is more evident in the two samples fixed with Bouin (C) and Hollande (B).

G1 area represents debris that was not considered for analysis. The DNA content obtained after fixation with Greenfix, UPM and CyMol gave similar results to formalin fixation; in particular, fixation with alcoholic mixtures produced a fluorescent profile comparable with the control tissue (Figure 6 A,B,D,E,F). These data, and a reduction of the coefficient of variation (*data not shown*), document good quality extracted DNA. In contrast, the DNA samples from samples fixed with Bouin or Hollande showed a reduction of fluorescence intensity (different dye absorption at the cellular level), with a leftward shift compared to the formalin fixed samples (Figure 6 B,C).

Discussion

To date, 4% formaldehyde solution (10% formalin) for fixation has been universal, preserving a wide range of tissues and tissue components. Nevertheless, in more than 100 years of use, certain chemical and functional inadequacies have only been partly overcome.¹¹ The peculiarities of formalin include the slow formation of covalent bonds in aqueous solution with rapid spread into the tissues. In a dilute solution (4%) formalin is not present in the free state but as methyleneglycol, which can react with the -NH₂ groups of proteins, forming methylene protein bridges (cross-linking).¹² Furthermore, formaldehyde modifies the conformation of macromolecules, altering the tertiary and quaternary structures of proteins, although the primary and secondary structures do not undergo substantial changes. The conformational changes of proteins can induce non-antigen recognition of antibodies that are used in immunohistochemistry.¹³ This problem has been tackled through the development and standardization of *Epitope Retrieval* methods (treatment with protease, heat, etc.). These methods allow the antigenicity of many markers to be recovered.¹⁴ However, this is not a physiological condition, and is subject to change due to variables inherent in methods (changes in temperature, pH, molarity of solutions, etc.). The chemical and physical parameters (time, temperature, pH, volume ratio in surgical specimen/fixative) may also influence the result. The fixation time, for example, will greatly influence the histopathological findings: too short a time may cause signal reduction at the centre of the edge sections, while prolonged fixation can generate the opposite effect. In addition, fixation with formaldehyde can generate free aldehyde groups in tissues, causing a non-specific antigenic response (production of false positives).¹⁵ Recently, the need for genetic typing of tumours in order to deter-

mine the predictors of response to targeted biological therapies has required the use of molecular biological techniques on tissues that have been fixed and embedded in paraffin blocks. However, it is known that formaldehyde interacts chemically with DNA in a similar manner to the way it does with proteins.¹⁶ Formaldehyde reacts with DNA to form hydroxymethylene bridges between two amino groups. Treatment with formalin may cause apurinic and apirimidinic sites, DNA degradation, and cross-linking of cytosine, with the consequent production of aberrant mutations.¹⁷

Currently, since histopathological diagnosis involves the use not only of traditional methods like histochemical stains, but also of special investigations such as immunohistochemistry and molecular methods (sequencing and FISH), we have compared the results obtained after formalin fixation vs alternative fixatives. We considered alternative fixatives that are alcohol-based *mixtures of fixatives*. Ethanol, the main coagulant fixative used in histopathology since antiquity, removes water molecules, thus destabilizing, altering the tertiary structure and denaturing proteins. This process does not affect the majority of antigens, but most of the CD (cluster of differentiation) molecules, and some antigens that are particularly rich in carbohydrates, may be deprived of their antigenicity. The effect of ethanol on DNA is minimal. Indeed, ethanol causes reversible denaturation of DNA. After rehydration, DNA can be used for molecular biology techniques.¹⁸

The mixtures we have investigated as fixatives are Greenfix, a commercial fixative for histology based on ethanediol and alcohol, and two solutions that are used for the transport of biological material, UPM (ethanol, methanol, isopropyl alcohol and formalin) and CyMol (ethanol, methanol and isopropyl alcohol). We have also used the historical fixatives Bouin and Holland, which incorporate picric acid, as controls for the morphological and histochemical evaluations. Despite the assumed *ideal* that a liquid fixative should preserve the tissue in conditions as close as possible to those in fresh tissue, every fixation method in reality causes artefacts, including formalin, which induces major changes in the biochemical characteristics of the tissues. Naturally, a pathologist is accustomed to this by years of work experience and literature that details the histological features induced by artefacts caused by formalin. From the morphological point of view all the fixatives used in our study can be considered as valid substitutes for formalin.

Ultimately, the morphological diversity due to alternative fixation should not preclude the formulation of a diagnosis. With regard to his-

tochemical and immunohistochemical analysis, Greenfix has proved a workable substitute for formalin. UPM and CyMol have produced acceptable results, but less satisfactory than Greenfix. Bouin and Hollande have worked well for histochemistry, but are not suitable for molecular applications.¹⁹ In molecular biology analysis, Greenfix proved significantly superior to formalin; UPM and CyMol gave satisfactory results, while Bouin and Hollande are not recommended for this type of investigation because of the precipitation of DNA. In FISH analysis, Greenfix has emerged as a possible substitute for formalin. UPM and CyMol gave poorer results than Greenfix, but were still acceptable, while Bouin and Hollande were not suitable for this type of investigation. The flow cytometry of ploidy revealed that Greenfix, UPM and CyMol are comparable to formalin. Greenfix proved to be a valid substitute for formalin as it gave satisfactory results for all of the investigations conducted. Bouin and Hollande, having demonstrated limitations in molecular biology, FISH and flow cytometry, are not suitable as substitutes for formalin. UPM and CyMol may be regarded as potential substitutes for formaldehyde with the possibility of technical improvement and standardization of protocols.

References

1. Puchtler H, Meloan SN. On the chemistry of formaldehyde fixation and its effects on immunohistochemical reactions. *Histochemistry* 1985;82:201-4.
2. Plénat F, Antunes L, Haller T, Piet-Ounnoughene M, Klein-Monhoven N, Champigneulle J, et al. Formaldehyde fixation in the third millennium. [Article in French]. *Ann Pathol* 2001;21:29-47.
3. Binetti R, Costamagna FM, Marcello I. Development of carcinogenicity classifications and evaluations: the case of formaldehyde. *Ann Ist Super Sanita* 2006;42:132-43.
4. Lassalle S, Hofman V, Marius I, Gavric-Tanga V, Brest P, Havet K, et al. Assessment of morphology, antigenicity, and nucleic acid integrity for diagnostic thyroid pathology using formalin substitute fixatives. *Thyroid* 2009;19:1239-48.
5. Stanta G, Mucelli SP, Petrerà F, Bonin S, Bussolati G. A novel fixative improves opportunities of nucleic acids and proteomic analysis in human archive's tissues. *Diagn Mol Pathol* 2006;15:115-23.
6. Costa S, Coelho P, Costa C, Silva S, Mayan O, Santos LS, et al. Genotoxic damage in pathology anatomy laboratory workers exposed to formaldehyde. *Toxicol*

- 2008;252:40-8.
7. Paavilainen L, Edvinsson A, Asplund A, Hober S, Kampf C, Pontén F, et al. The impact of tissue fixatives on morphology and antibody-based protein profiling in tissues and cells. *J Histochem Cytochem* 2010;58:237-46.
 8. Buesa RJ. Histology without formalin? *Ann Diagn Pathol* 2008;12:387-96.
 9. Tadrous PJ. Digital stain separation for histological images. *J Microsc* 2010;240:164-72.
 10. Karapetis CS, Khambata-Ford S, Jonker DJ, O'Callaghan CJ, Tu D, Tebbutt NC, et al. K-ras mutations and benefit from Cetuximab in advanced colorectal cancer. *N Engl J Med* 2008;359:1757-65.
 11. Boon ME, Kok LP. Theory and practice of combining coagulant fixation and microwave histoprocessing. *Biotech Histochem* 2008;83:261-77.
 12. Fox CH, Johnson FB, Whiting J, Roller PP. Formaldehyde fixation. *J Histochem Cytochem* 1985;33: 845-53.
 13. O'Leary TJ, Fowler CB, Evers DL, Mason JT. Protein fixation and antigen retrieval: chemical studies. *Biotech Histochem* 2009;84:217-21.
 14. Ramos-Vara JA. Technical aspects of immunohistochemistry. *Vet Pathol* 2005;42:405-26.
 15. Bussolati G, Leonardo E. Technical pitfalls potentially affecting diagnoses in immunohistochemistry. *J Clin Pathol* 2008;61:1184-92.
 16. Srinivasan M, Sedmak D, Jewell S. Effect of fixatives and tissue processing on the content and integrity of nucleic acids. *Am J Pathol* 2002;161:1961-71.
 17. Williams C, Pontén F, Moberg C, Söderkvist P, Uhlén M, Pontén J, et al. A high frequency of sequence alterations is due to formalin fixation of archival specimens. *Am J Pathol* 1999;155:1467-71.
 18. Gillespie JW, Best CJM, Bichsel VE, Cole KA, Greenhut SF, Hewitt SM, et al. Evaluation of non-formalin tissue fixation for molecular profiling studies. *Am J Pathol* 2002;160:449-57.
 19. Baloglu G, Haholu A, Kucukodaci Z, Yilmaz I, Yildirim S, Baloglu H. The effects of tissue fixation alternatives on DNA content: a study on normal colon tissue. *Appl Immunohistochem Mol Morphol* 2008;16:485-92.